

1. Google: UIC ACCC software:

<http://accs.uic.edu/service/software>

2. Go to the personal use link:

<http://webstore.illinois.edu/home/>

3. Click the personal purchase link:

<https://webstore.illinois.edu/shop/category.aspx?zcid=107&shopby=1>

4. Click Chicago Campus Offers:

<https://webstore.illinois.edu/shop/category.aspx?zcid=107&shopby=1>

5. Click the Matlab License & Download:

<https://webstore.illinois.edu/Shop/product.aspx?zpid=1271>

6. Highlight Download Only and add to cart.

7. Select Chicago Campus and hit the Select button.

8. Log in with your standard NetID.

9. Hit I agree.

10. Hit Checkout.

11. Hit the red triangle by license file and save liscence.dat somewhere convenient.

12. Next, hit the red triangle next to the appropriate version of Matlab. I am getting version 8.2 for Windows. Save the zip file somewhere convenient. It will take some time to download the software. Note that there are further instillation instructions here. Also note the installation key; it is needed on step 16.

13. Now open the zip file. Click on Setup.


**Order# E1317948**

Order Date: 2/8/2014

Ship To: Preston Snee  
Email: sneep@uic.edu

Order Total: \$0.00

Payment Method:

Quantity	Product Name	Price	Installation Key/Code	Download
1	MATLAB License & Download	\$0.00		 License File  Matlab 8 (R2012b) Mac/Linux/UNIX  Matlab 8 (R2012b) Windows  Matlab 8.1 (R2013a) Mac/Linux  Matlab 8.1 (R2013a) Windows  Matlab 8.2 (R2013b) Mac/Linux  Matlab 8.2 (R2013b) Windows  Matlab Connector
1	Download Only	\$0.00		

Additional Instructions for **MATLAB License & Download**:

MATLAB License & Download

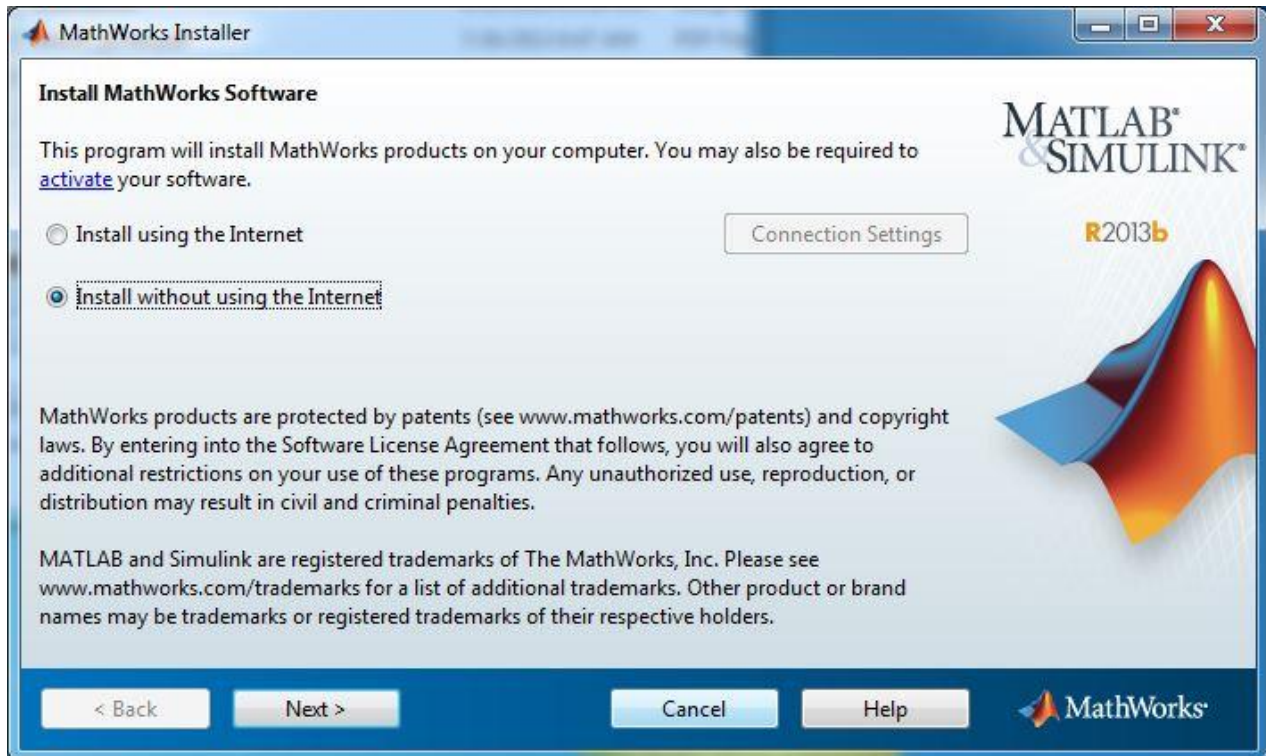
File Installation Key for 2013b:

10618-33354-20048-45470-36539-47981-43448-29017-28066-16684-57655-60427-39229-03975-46473-18823-62882

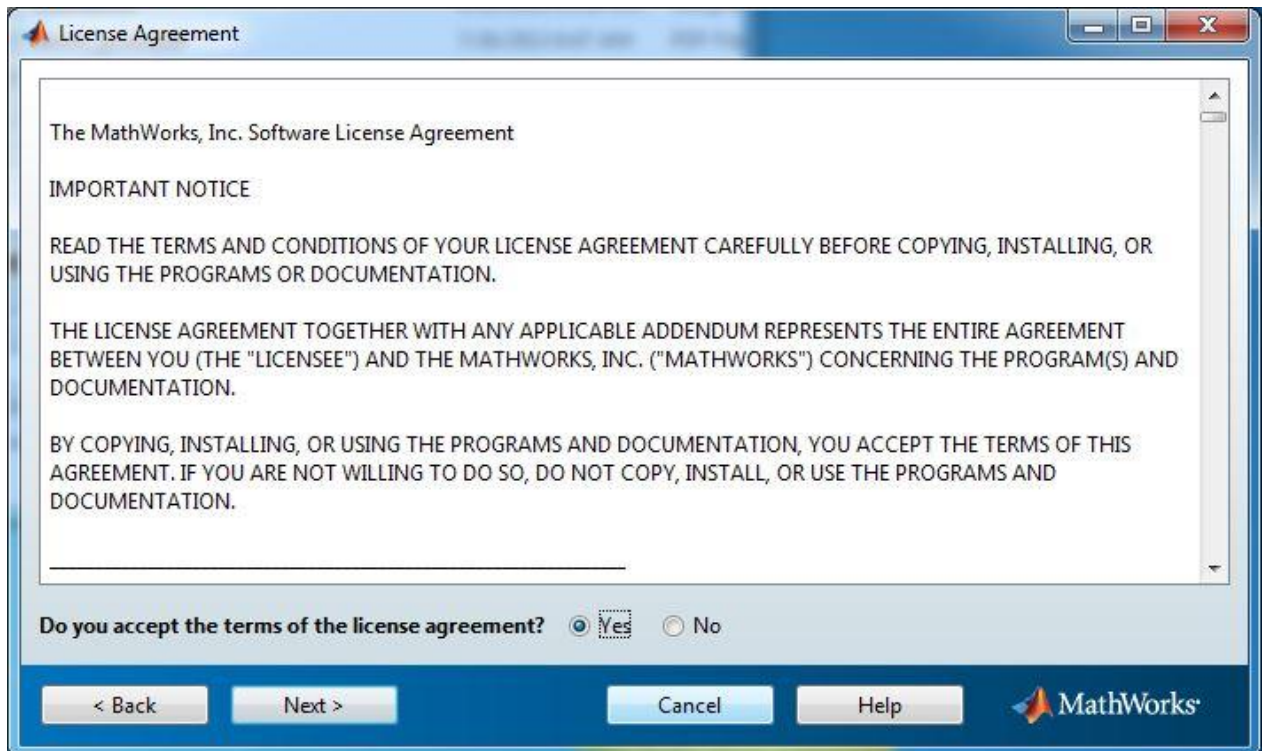
Click [here](#) for installation instructions.

Note for instructors where MATLAB will only be used for course prep and for instructional lab administrators: To help control costs, please follow the additional instructions in the FAQ [here](#) to use the University's classroom licenses for MATLAB which have the same functionality but a much lower cost. Matlab installation instructions.

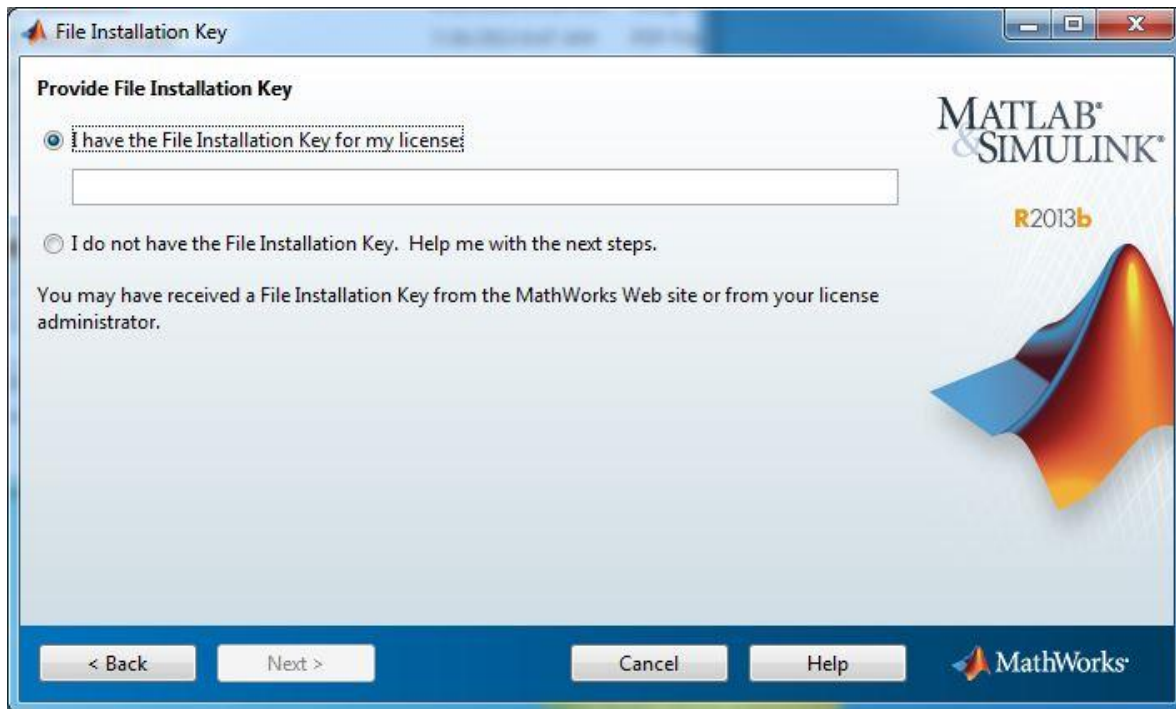
14. Select Install with out using the Internet and click on Next.



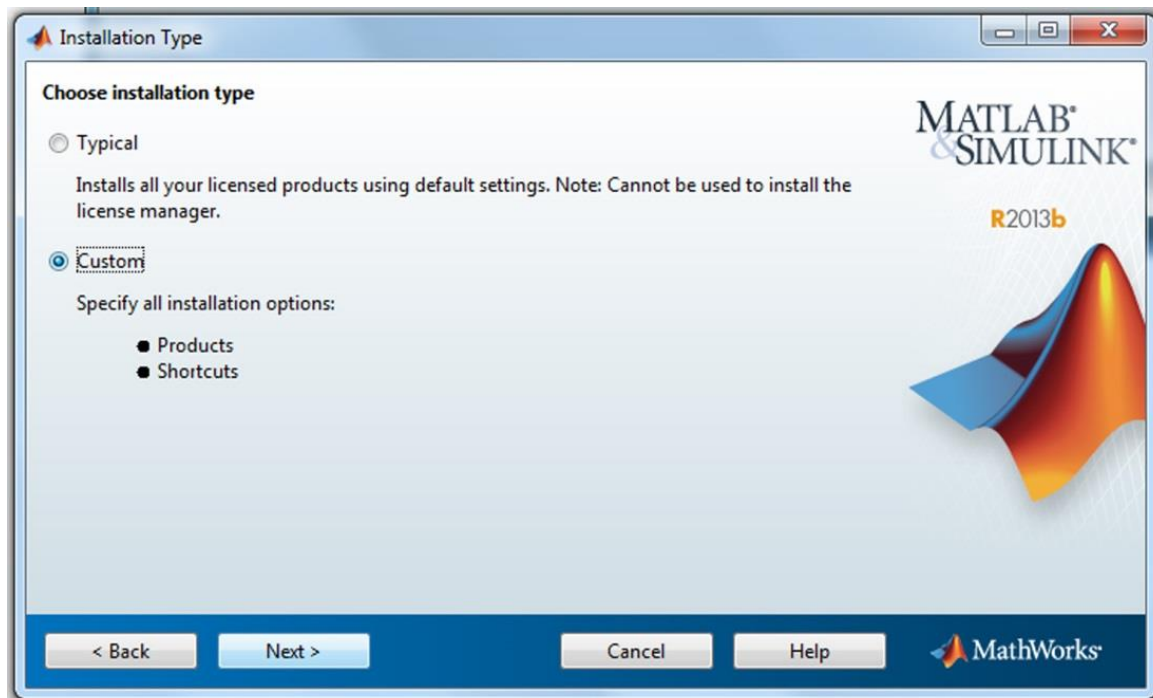
15. Agree to the license by selecting Yes and clicking on Next.



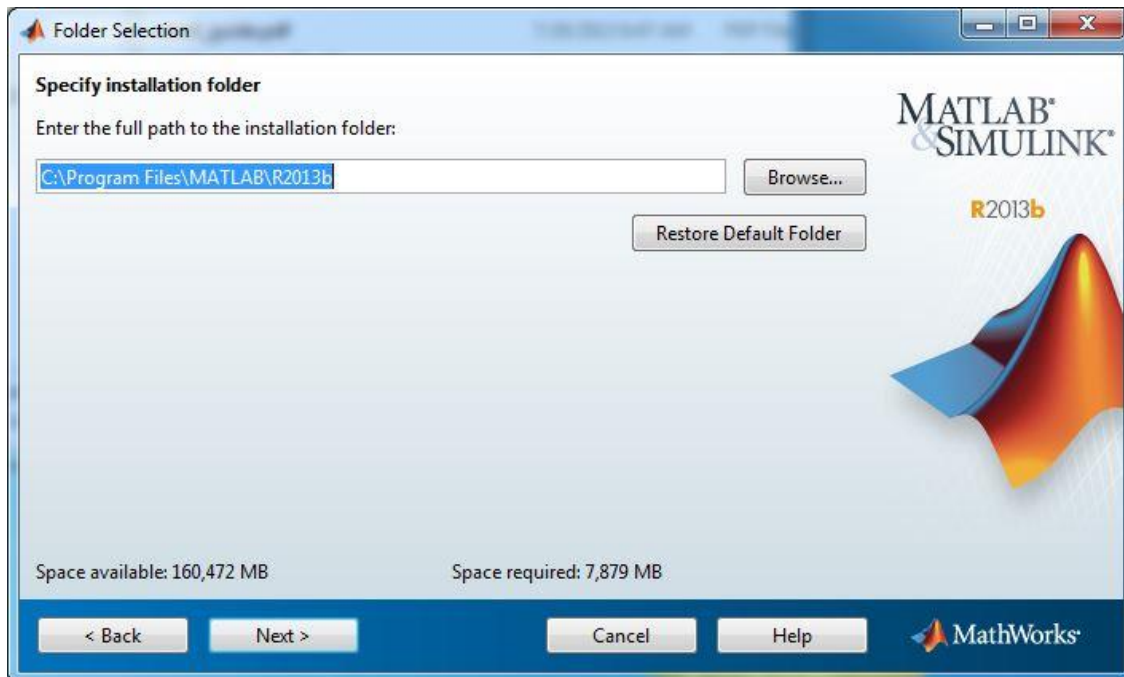
16. Enter the file installation key and click on *Next*. The installation key was provided to you when you purchased the software. You can retrieve this number by logging into the WebStore and clicking on Order History. Find this offer on your list and click on the order number.



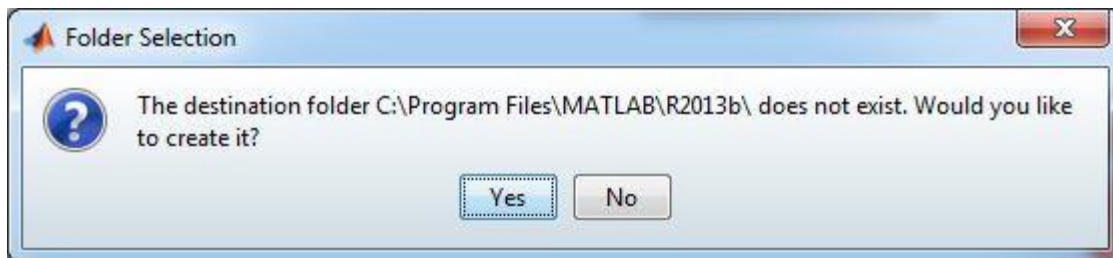
17. Choose Custom and click on *Next*.



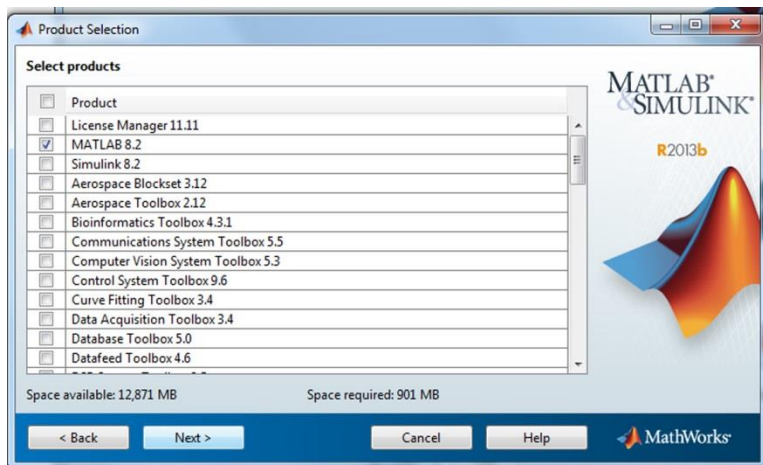
18. Specify an installation folder and click on *Next*.



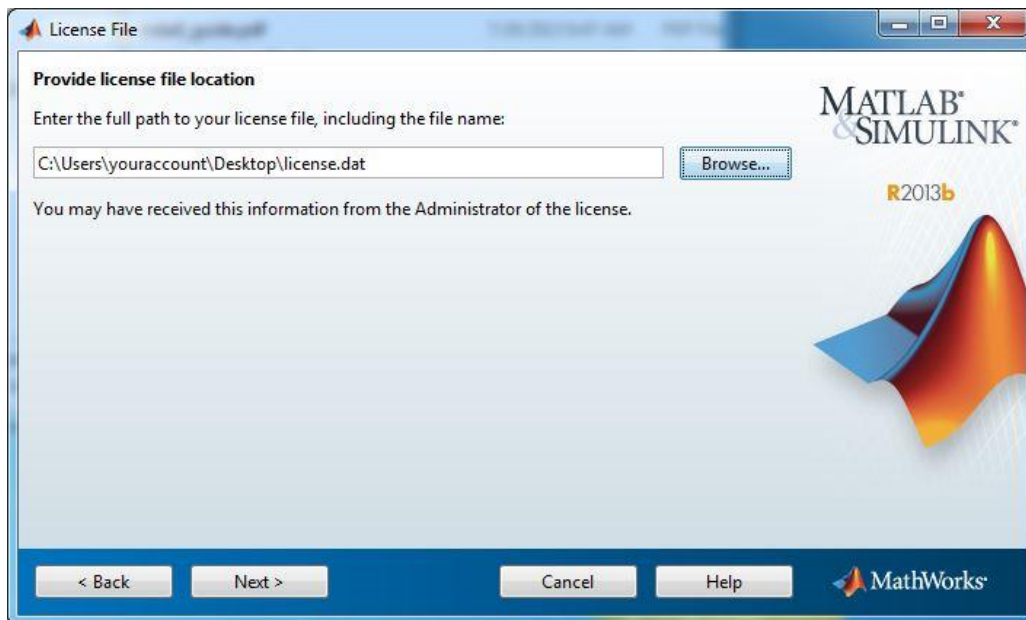
19. Click on *Yes*.



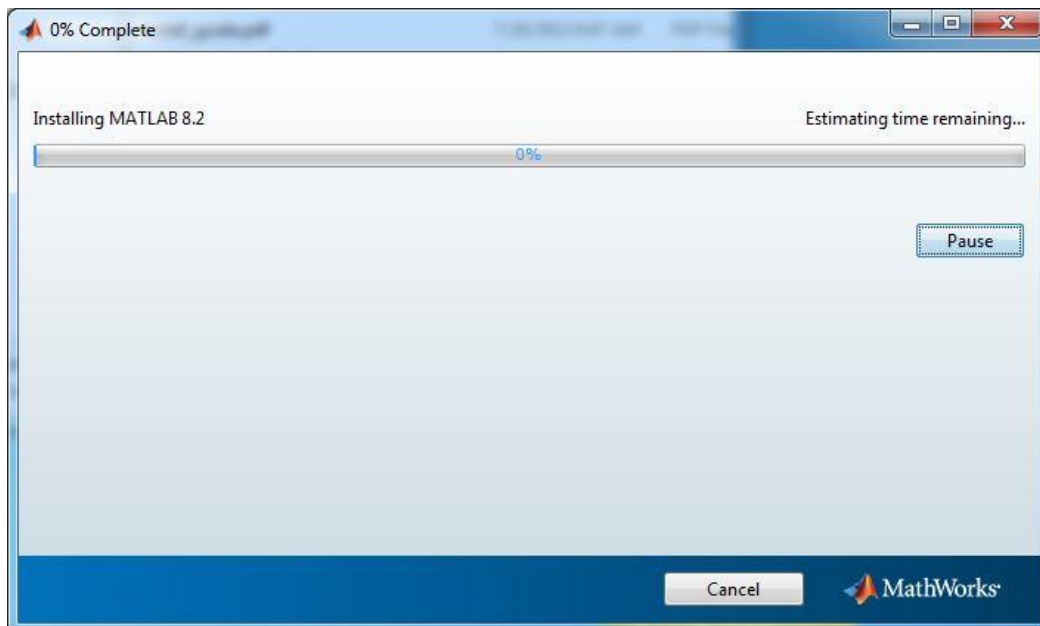
20. Unclick everything but Matlab at the top.



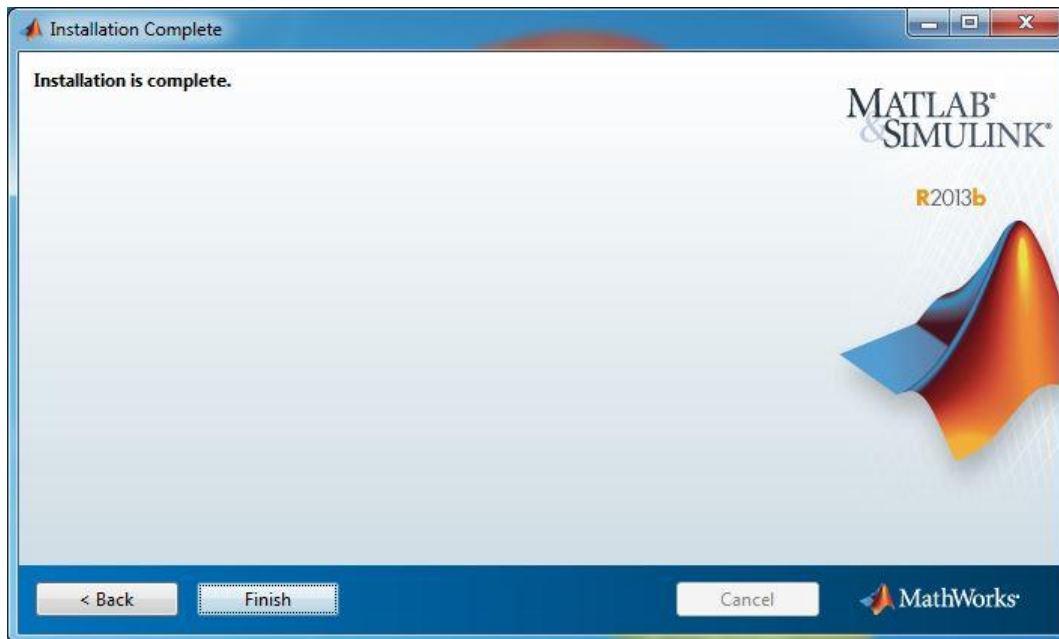
21. Click on the *Browse* button. Browse to the license file you downloaded in step 11 and click on *Select*. Click on *Next*.



22. Confirm your installation settings and click on *Install*. The installation will begin and take several minutes.



23. The installation is complete. Click *Finish*.



24. You are now ready to use Matlab 8.2 R2013b. Remember, that if you are off-campus or using wireless you must use the [VPN](#) to access the campus network.