


minispec

- mq20 Toothpaste Analyzer
User Manual
Version 001



Copyright © by Bruker Corporation

All rights reserved. No part of this publication may be reproduced, stored in a retrieval system, or transmitted, in any form, or by any means without the prior consent of the publisher. Product names used are trademarks or registered trademarks of their respective holders.

This manual was written by

AIC

© January 08, 2016 Bruker Corporation

P/N: E1400912

For further technical assistance for this product, please do not hesitate to contact your nearest BRUKER dealer or contact us directly at:

Bruker Corporation
Am Silberstreifen
76287 Rheinstetten
Germany
Phone: +49 721-5161-6155/+1 978-667-9580
E-mail: minispec.SLS@bruker.com
Internet: www.bruker.com

Contents

1	About This Manual	7
1.1	Policy Statement	7
1.2	Symbols and Conventions	7
2	Safety	9
2.1	Intended Use	9
2.2	Qualified Personnel	9
2.3	Correct Usage	9
2.4	Electrical Safety	10
2.5	Lifting Safety	11
2.6	Personal Safety	11
2.6.1	Safety for Persons Wearing Pacemakers	11
2.6.2	Safety When Working with Glassware	13
3	Transport, Packaging and Storage	15
3.1	Symbols on the Packaging	15
3.2	Inspection at Delivery	16
3.3	Packaging	17
3.4	Storage	17
4	Technical Data	19
4.1	General Information	19
4.2	Connection Values	19
4.3	Operating Conditions	20
4.4	minispec Software CD	20
4.5	Specifications mq20 Toothpaste Analyzer	21
4.5.1	Weights and Dimensions	21
4.5.2	Electrical Specifications	21
4.6	Rating Plate	21
5	Introduction	23
5.1	Siting Considerations	24
5.1.1	Environmental Considerations	24
5.2	Installation of the minispec mq20 Toothpaste Analyzer	26
5.2.1	Unpacking the System	26
5.2.2	Electronic Control and the Magnet Unit Connections	28
5.3	Interpretation of the LEDs	29
5.3.1	LEDs for the mq20 Toothpaste Analyzer	29
5.4	Calibration Samples Hatch and Probe Exchange	29
6	Getting Started	31
6.1	Software Installation	31
6.2	Connecting the PC to the minispec for the First Time	32
6.2.1	Direct Cable Connection	32
6.2.2	Connection to a Network	32
7	Running the minispec mq20 Toothpaste Analyzer	33

7.1	mq20 Toothpaste Analyzer On Temperature.....	33
7.2	Running minispec Plus Software	33
7.2.1	Daily Check.....	34
7.3	Calibrations	35
7.4	Measurements of Unknown Samples	41
7.4.1	Result Handling.....	43
7.5	Administration Details	44
7.6	More Details.....	46
8	minispec.exe Software for Diagnostic and Service Purposes	47
8.1	Configuration of minispec.exe.....	47
8.1.1	Wake-up State of the minispec.exe Software	47
8.1.2	Configuration of the Software, the Welcome Box	47
8.1.2.1	Selecting Applications and Connections.....	48
8.1.2.2	Changing Analyzer Type and Calibration Permission.....	49
8.1.3	General Measurement Handling	49
8.2	minispec.exe Standard Windows.....	50
8.2.1	The Signal Window	50
8.2.2	The Results Window	50
8.2.3	The Spreadsheet Window.....	51
8.2.3.1	Execution of Spreadsheets	51
8.2.3.2	Saving Spreadsheets.....	51
8.2.3.3	Monitoring	51
8.3	minispec.exe Menu Functions	52
8.3.1	The Bars	52
8.3.2	The File Menu	53
8.3.3	The Edit Menu.....	56
8.3.4	The minispec Menu.....	57
8.3.5	The Measurement Menu	60
8.3.6	The Parameter Menu	62
8.3.6.1	The Acquisition Parameter Table Command	62
8.3.6.2	The Application Configuration Table Command	64
8.3.6.3	The Acquisition Pre-Delay Time command.....	64
8.3.6.4	The Repetitive Measurement Settings Command	65
8.3.7	The View Menu	65
8.3.8	The Process Menu.....	69
8.3.9	The Window Menu	70
8.3.10	The Help Menu	71
9	Basic NMR Principles.....	73
10	Maintenance.....	75
10.1	Cleaning.....	75
11	Dismantling and Disposal.....	77
11.1	Dismantling	77
11.2	Disposal	77
12	Contact	79
	List of Figures.....	81

Index 83

1 About This Manual

This manual enables safe and efficient handling of the device.

This manual is an integral part of the device, and must be kept in close proximity to the device where it is permanently accessible to personnel. In addition, instructions concerning labor protection laws, operator regulations tools and supplies must be available and adhered to.

Before starting any work, personnel must read the manual thoroughly and understand its contents. Compliance with all specified safety and operating instructions, as well as local work safety regulations, are vital to ensure safe operation.

The figures shown in this manual are designed to be general and informative and may not represent the specific Bruker model, component or software/firmware version you are working with. Options and accessories may or may not be illustrated in each figure.

1.1 Policy Statement

It is the policy of Bruker to improve products as new techniques and components become available. Bruker reserves the right to change specifications at any time.

Every effort has been made to avoid errors in text and figure presentation in this publication. In order to produce useful and appropriate documentation, we welcome your comments on this publication. Support engineers are advised to regularly check with Bruker for updated information.

Bruker is committed to providing customers with inventive, high quality products and services that are environmentally sound.

1.2 Symbols and Conventions

Safety instructions in this manual are marked with symbols. The safety instructions are introduced using indicative words which express the extent of the hazard.

In order to avoid accidents, personal injury or damage to property, always observe safety instructions and proceed with care.



DANGER



DANGER indicates a hazardous situation which, if not avoided, will result in death or serious injury.

This is the consequence of not following the warning.

1. This is the safety condition.
 - ▶ This is the safety instruction.

WARNING



WARNING indicates a hazardous situation, which, if not avoided, could result in death or serious injury.

This is the consequence of not following the warning.

1. This is the safety condition.
 - ▶ This is the safety instruction.

CAUTION



CAUTION indicates a hazardous situation, which, if not avoided, may result in minor or moderate injury or severe material or property damage.

This is the consequence of not following the warning.

1. This is the safety condition.
 - ▶ This is the safety instruction.

NOTICE

NOTICE indicates a property damage message.

This is the consequence of not following the notice.

1. This is a safety condition.
 - ▶ This is a safety instruction.

SAFETY INSTRUCTIONS

SAFETY INSTRUCTIONS are used for control flow and shutdowns in the event of an error or emergency.

This is the consequence of not following the safety instructions.

1. This is a safety condition.
 - ▶ This is a safety instruction.



This symbol highlights useful tips and recommendations as well as information designed to ensure efficient and smooth operation.

2 Safety

This manual contains notices which should be observed to ensure your own personal safety as well as to protect the spectrometer and the connected equipment.

2.1 Intended Use

The minispec mq20 Toothpaste Analyzer is a pulsed time-domain NMR analyzer used for the monitoring of the fluorine nuclei.

This product is intended to be used solely for measurements on industrial samples.

2.2 Qualified Personnel

The minispec may only be set up and operated in conjunction with the instructions in this manual. Only qualified personnel should be allowed to work on this equipment. The primary installation, maintenance and repair of the minispec may only be carried out by personnel which are authorized by BRUKER.

All repairs, adjustments and alignments performed on any components of the minispec must be carried out strictly in accordance with the established safety practices and standards of the country where the instrument is installed.

2.3 Correct Usage

This device and its components may only be used in the way discussed with a BRUKER specialist and in connection with devices or components from other manufacturers which have been approved or recommended by BRUKER.



Note: This product can only function correctly and safely if it is transported, stored, set up and installed correctly, and operated and maintained as recommended by BRUKER.

2.4 Electrical Safety

There is no danger of electrical shock during routine operation of the spectrometer, however the following precautions must be followed to assure user safety and protection of the instrument.

WARNING

Electrical hazard from electrical shock

A life threatening shock may result when maintenance is performed.



- ▶ Place the mains power switch in the OFF position (direction labeled "0" on the switch).
- ▶ Disconnect the device from the electrical power supply before maintenance. Use a voltmeter to verify that the device is not under power!
- ▶ Be sure that the power supply cannot be reconnected without notice.
- ▶ Ensure that all warning labels are in place.
- ▶ Only trained personnel should carry out maintenance.

The safety precautions applicable to any electronic device connected to AC power must be observed.



Always use the power cable that is delivered with the product.

If replacement of the power cable is necessary, make sure that the ratings with regard to the power consumption of the device are suitable.

WARNING

Electrical hazard from stored electrical charge

A life threatening shock or material damage may result from a stored electrical charge.

Never touch electrical contacts or semiconductor chips with any object (conductive or non-conductive) unless all of the following conditions are met:



- ▶ The power switch is off.
 - ▶ The power plug is disconnected from either the power socket or the main power socket on the spectrometer.
 - ▶ The conductive object and you are grounded.
- ⇒ This precaution prevents the possibility of electrical shock from stored charge within the power supply circuitry or the transfer of static charge that can damage semiconductor chips.



Note: No other components within the spectrometer should be touched (even with the power off) without first contacting a Bruker service representative to obtain all necessary instructions, to ensure user and spectrometer safety.

2.5 Lifting Safety

The magnet unit weighs about 85 kg, to ensure safety the follow safety instructions must be followed:

CAUTION



Risk of injury from lifting heavy objects.

The unit is very heavy and may lead to injury when lifting.

- ▶ Do not attempt to lift the unit over the edge of the carton, remove the carton first.
- ▶ Do not attempt to lift the unit on your own or without necessary precaution against injury.
- ▶ Use a hoist if available.
- ▶ Follow the step-by-step instructions in the installation section of this manual.

2.6 Personal Safety

2.6.1 Safety for Persons Wearing Pacemakers

The instrument contains strong magnetic fields, some of which extend beyond the magnet unit house (see stray field diagram below). These pose no danger to routine users, but are hazardous to persons with heart pacemakers or other medical implantations.

WARNING



Danger to life from strong magnetic fields!

Strong magnetic fields may cause serious injuries or death and significant damage to property.

- ▶ Persons fitted with heart pacemakers must be kept away from the device. The functionality of the heart pacemaker could be compromised.
- ▶ Persons with metal implants must be kept away from the device. Implants may heat up or be subject to magnetic attraction.
- ▶ Ferromagnetic materials, tools, and electromagnets must be kept away from the magnetic source. Such materials could be subject to magnetic attraction and may fly around the room, injuring or killing people. Minimum distance 3 meters.
- ▶ Remove magnetic items (jewelry, watches, pens etc.) before carrying out maintenance work.
- ▶ Keep electronic equipment away from the magnetic source. Such equipment could be damaged.
- ▶ Keep storage media, credit cards etc. away from the magnetic source. Data could be erased.

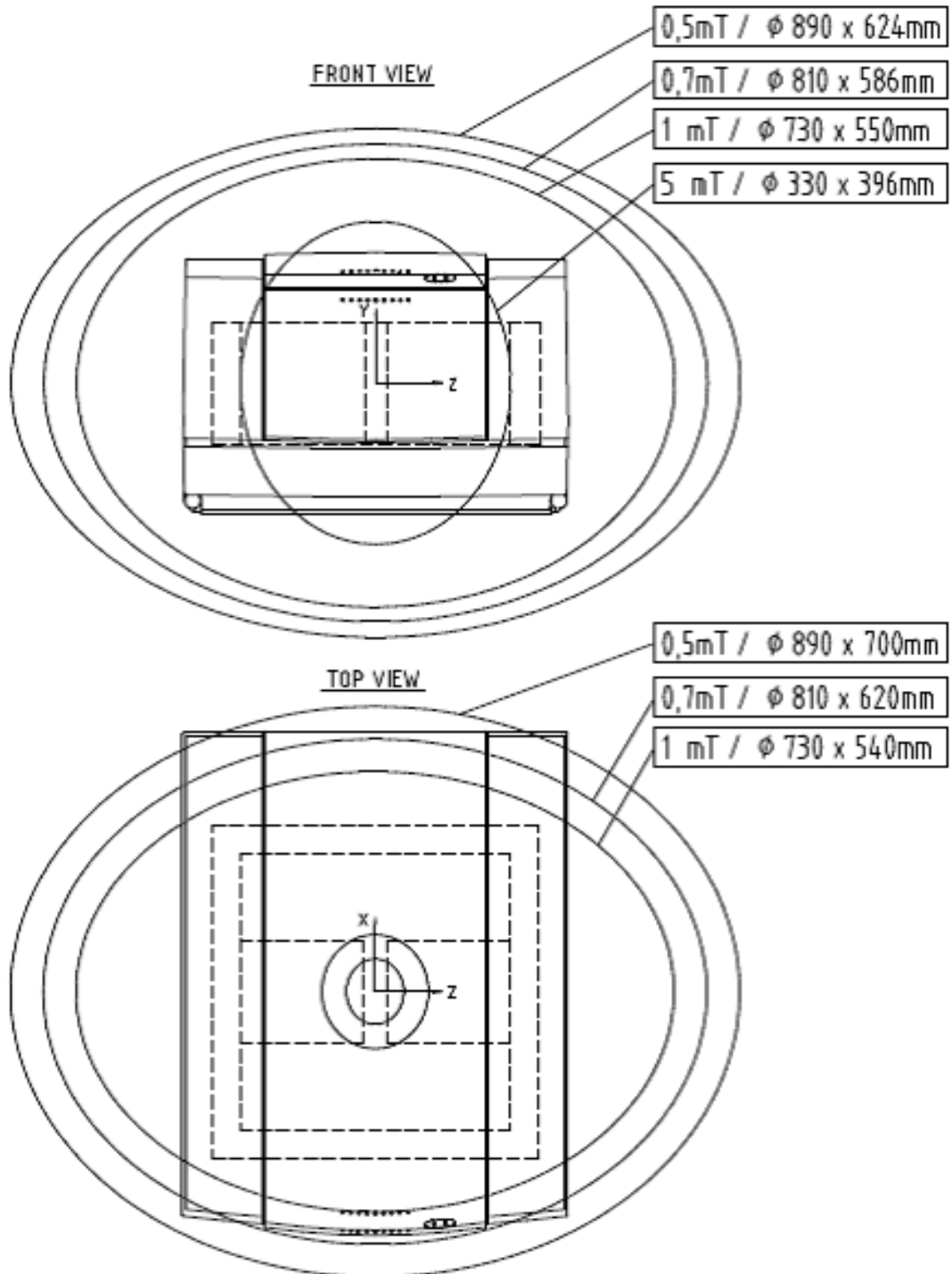


Figure 2.1: Magnet Stray Field Plot

For the mq20 Toothpaste Analyzer the following distances of the 5 Gauss line from the housing of the system apply (refer to figure above):

- System front and back panels: 5 Gauss line goes 5 cm out of the box.
- Upper and lower surfaces: 5 Gauss line goes 25 cm out of the box.
- Lateral plates: 5 Gauss line goes 25 cm out of the box.

2.6.2 Safety When Working with Glassware

WARNING

Danger of injury from glassware or ceramics breakage!

Broken glassware or ceramics may cause minor injuries or material damage, but may also result in a life threatening situation if hazardous substances are used.

- ▶ If glassware or ceramics breaks, refer to the corresponding precautions and cleaning/disinfection instructions.
- ▶ Wear protective equipment.
- ▶ Perform all tasks with the glassware or ceramics carefully.
- ▶ Before carrying out any maintenance work, remove the samples and use dummy samples if necessary.
- ▶ Strictly observe the correct sample adjustment, i.e. the maximum sample height.
- ▶ Always transport the glassware or ceramics with the cover, if applicable. Never turn the glassware or ceramics upside down or on it's side.
- ▶ **The laboratory supervisor is responsible for:**
 - ⇒ Establishing and enforcing standard sample handling and cleaning procedures.
 - ⇒ Establishing and enforcing the use of protective clothing and equipment.
 - ⇒ Training laboratory personnel.
 - ⇒ Preparing an emergency plan.










3 Transport, Packaging and Storage



Installation, initial commissioning, retrofitting, repairs, adjustments or dismantling of the device must only be carried out by Bruker Service or personnel authorized by Bruker. Damage due to servicing that is not authorized by Bruker is not covered by your warranty.

3.1 Symbols on the Packaging

The following symbols are affixed to the packaging material. Always observe the symbols during transport and handling.

Top		The arrow tips on the sign mark the top of the package. They must always point upwards; otherwise the content may be damaged.
Fragile		Marks packages with fragile or sensitive contents. Handle the package with care; do not allow the package to fall and do not allow it to be impacted.
Protect Against Moisture		Protect packages against moisture and keep dry.
Attach Here		Lifting gear (lifting chain, lifting strap) must only be attached to points bearing this symbol.
Center of Gravity		Marks the center of gravity of packages. Note the location of the center of gravity when lifting and transporting.
Weight, Attached Load		Indicates the weight of packages. Handle the marked package in accordance with its weight.
Permitted Stacking Load		Indicates packages which are partially stackable. Do not exceed the maximum load-bearing capacity specified on the symbol in order to avoid damaging or destroying the content.





<p>Do not Damage Air-tight Packaging</p>		<p>The packaging is air-tight. Damage to the barrier layer may render the contents unusable.</p> <p>Do not pierce.</p> <p>Do not use sharp objects to open.</p>
<p>Component Sensitive to Electrostatic Charge</p>		<p>The packaging contains components which are sensitive to an electrostatic charge.</p> <p>Only allow packaging to be opened by trained personnel.</p> <p>Establish potential equalisation before opening.</p>
<p>Protect from Heat</p>		<p>Protect packages against heat and direct sunlight.</p>
<p>Protect from Heat and Radioactive Sources</p>		<p>Protect packages against heat, direct sunlight and radioactive sources.</p>

Table 3.1: Symbols on the Packaging

3.2 Inspection at Delivery

Upon receipt, immediately inspect the delivery for completeness and transport damage.

Proceed as follows in the event of externally apparent transport damage:

- Do not accept the delivery, or only accept it subject to reservation.
- Note the extent of the damage on the transport documentation or the shipper's delivery note.
- Initiate complaint procedures.



Note: Issue a complaint in respect to each defect immediately following detection. Damage compensation claims can only be asserted within the applicable complaint deadlines.

3.3 Packaging

About Packaging

The individual packages are packaged in accordance with anticipated transport conditions. Only environmentally friendly materials have been used in the packaging.

The packaging is intended to protect the individual components from transport damage, corrosion and other damage prior to assembly. Therefore do not destroy the packaging and only remove it shortly before assembly.

It is recommended to store the packaging for later use in the event that you need to return the unit to Bruker.

Handling Packaging Materials

Dispose of packaging material in accordance with the relevant applicable legal requirements and local regulations (see [Dismantling and Disposal \[▶ 77\]](#)).

3.4 Storage

Storage of the Packages

Store the packages under the following conditions:

- Do not store outdoors.
- Store in dry and dust-free conditions.
- Do not expose to aggressive media.
- Protect against direct sunlight.
- Avoid mechanical shocks.
- Storage temperature: 15 to 35 °C.
- Relative humidity: max. 60%.
- If stored for longer than 3 months, regularly check the general condition of all parts and the packaging. If necessary, top-up or replace preservatives.



Note: Under certain circumstances, storage instructions may be affixed to packages which expand the requirements specified here. Comply with these accordingly.

4 Technical Data

4.1 General Information

No.	Series	Type	Weight (kg)	Length (cm)	Width (cm)	Height (cm)
1	mq20	Toothpaste Analyzer	105	65	75	33

Table 4.1: Technical Data: General Information

All specifications above are without a PC. Weights and dimensions apply to the instruments, not to the packaged systems.

4.2 Connection Values

Grounding is vital for the safe operation of the instrument. Never operate with the grounding conductor disconnected. If the local wiring does not provide a ground, an earth-to-chassis connection must be added at the user's location.



Note: Since the input voltage may be unstable in a laboratory environment, it is recommended to connect the minispec to a separate circuit that is not used by any other equipment. Furthermore, a voltage stabilizer or UPS may be required to avoid instrument instabilities or other unexpected system behavior caused by a fluctuating input voltage.

No.	Series	Type	ND/NE/NF	Voltage/VAC	Apparent Power Consumption, Maximum/VA	Circuit Protection (Two indications: NF/ND Series)	Frequency/Hz
1	mq20	Toothpaste Analyzer	NF	100-240	300/250	3.15/2.5 AT (2 pieces)	50-60

Table 4.2: Electrical Connection Values

4.3 Operating Conditions

Environment

No.	Series	Type	Temperature Range, Maximum/°C	Temperature Range, Ideal/ °C	Relative Humidity at 31 °C, Maximum/%	Decreasing Linear Till Relative Humidity < 50% at 40°C, maximum/%	IP Safety Class
1	mq20	Toothpaste Analyzer	18-28	22-25	80 (non-condensing)	< 50%	IP20

Table 4.3: Operating Environment

Normal environmental conditions (CAN/CSA 61010-1-12; IEC 61010-1: 2010; ANSI/UL 61010-1)

- Indoor use only.
- Maximum operation altitude: 2000 m.
- Ideal operating temperature: 22-25 °C. Minimum operating temperature: 18°C Maximum operating temperature: 28°C Humidity (non-condensing): 20-80%
- Maximum relative humidity 80% for temperatures up to 31 or decreasing linearly to 50% relative humidity at 40 °C.
- MAINS supply voltage fluctuations up to ±10% of the nominal voltage.
- TRANSIENT OVERVOLTAGES up to the levels of OVERVOLTAGE CATEGORY II.
- Pollution degree 2.
- Protection class IP20.

4.4 minispec Software CD

Description	Manual	Bruker Part Number
minispec Software CD-ROM (Windows 7/Office 2013).	The minispec Pre-Installation manual is available as a PDF document on the CD-ROM/memory stick.	E1405378

Table 4.4: Bruker minispec Software-CD

4.5 Specifications mq20 Toothpaste Analyzer

4.5.1 Weights and Dimensions

	Electronic Control Unit	Magnet Unit
Dimensions (W x H x D) in cm	23 x 31 x 60	47 x 31 x 60
Weight (kg)	20	85

Table 4.5: Weights and Dimensions for mq20 Toothpaste Analyzer

4.5.2 Electrical Specifications

minispec mq-Series systems (wideline versions / see corresponding label on back of the unit):

The instruments (wideline) are specified for the following mains voltages:

Input Voltage Range: 100 – 240 V AC 50/60 Hz

Fuse rating mq-Series NF: 2 x 3.15 AT

All Systems

Grounding is vital for the safe operation of the instrument. Never operate with the grounding conductor disconnected. If the local wiring does not provide a ground, an earth-to-chassis connection must be added at the user's location.



Note: Since the input voltage may be unstable in a laboratory environment, it is recommended to connect the minispec to a separate circuit that is not used by any other equipment. Furthermore, a voltage stabilizer or UPS may be required to avoid instrument instabilities or other unexpected system behavior caused by a fluctuating input voltage.

4.6 Rating Plate

The rating plate is located at the power input and includes the following information:

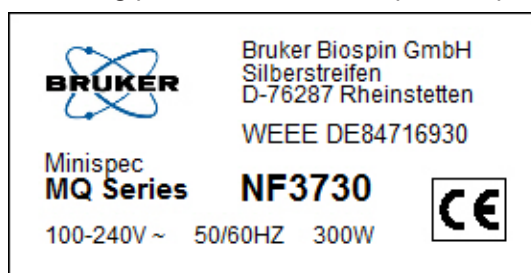


Figure 4.1: The minispec MQ-Series Rating Plate

5 Introduction

The minispec mq20 Toothpaste Analyzer is a benchtop Nuclear Magnetic Resonance (NMR) analyzer for detection of fluorine (^{19}F).

This manual provides instructions on proper installation of the minispec and an introduction to the use of the minispec hardware and software. Topics covered include:

- Installation of hardware (section Installation of the minispec mq-Series).
- Installation of software for Windows™ 7 32-bit/64-bit if needed (section [Software Installation](#) [31]).
- Software configuration, if needed. Analyzers typically are equipped with PC systems and pre-installed software.
- Proper operation of the system by using minispec Plus software, the GUI for the mq20 Toothpaste Analyzer (calibration, measurement, result, administration, etc.).
- Using minispec.exe software, the minispec software used for diagnostic and service purposes.
- The software functions are discussed step by step, using pictures to help familiarize the user with all of the accessible minispec features.
- Finally, for a better understanding of the principles involved, an introduction to the basics of NMR is provided in the section [Basic NMR Principles](#) [73].

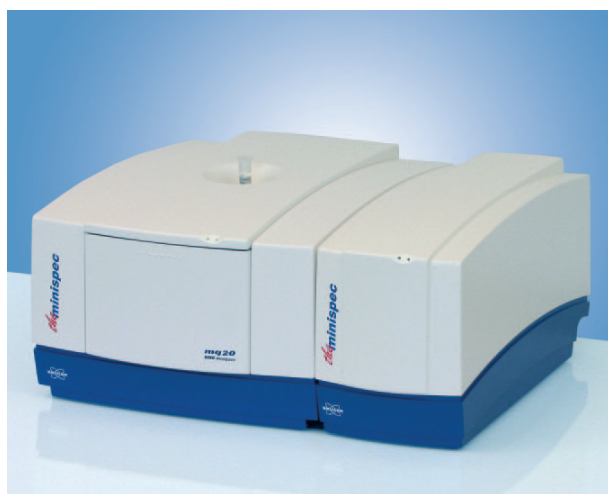


Figure 5.1: The minispec mq20 Toothpaste Analyzer

The minispec software package **minispec Plus** is the main software running on the mq20 Toothpaste Analyzer systems and is described in this manual. Software operation is explained in detail in the following manuals, which are available on the minispec software CD/memory stick:

- minispec Plus Administration
- minispec Plus Classic
- minispec Plus Chemometrics
- minispec Plus NoCalibration

5.1 Siting Considerations

Place the units on a strong, level, non-magnetic benchtop surface, capable of supporting their weight (refer to Weights and Dimensions). A minimum distance of 10 cm should be allowed between the back of the Electronic Control Unit and adjacent objects in order to ensure sufficient air-cooling.

Since objects containing iron can influence the magnetic field inside the Magnet Unit, do not locate the Magnet Unit within 1 m of large iron objects or within 2 m of moving metallic objects.

CAUTION

Accident or material damage hazard from falling or tilting instrument

Instrument may fall down or tilt during installation, retrofitting, dismantling, or while moving on a cart.

- ▶ Use the carrying handles during lifting.
- ▶ When a table or cart is used, it should meet the requirements in the pre-installation manual.
- ▶ The instrument should be secured to the cart or table.



5.1.1 Environmental Considerations

The minispec should be used in areas free from direct sunlight, heat sources and power cables.

A constant temperature is important for field stability and accurate reproduction of measurement results.

The usual magnet temperature (if not indicated different) is 40°C for all instruments.

These temperatures have been selected because they are well above the expected ambient (laboratory) temperatures and therefore allow accurate tempering of the minispec unit.

Tempering of the magnet and the console electronics is accomplished with a closed cycle zero maintenance, air ventilation system, so that no external air is ventilated through the console or the Analyzer Unit.

In some factory environments where dust may be a problem, it may be desirable to house the minispec computer in a clean room or ventilated housing, which is protected from dust. The Analyzer Unit can be placed nearby at a location more convenient for process personnel.

The instrument contains strong magnetic fields, some of which extend beyond the Analyzer unit housing (see stray field diagram page 14-17). These pose no danger to routine users, but are hazardous to persons with heart pacemakers or other medical implantations.

 **WARNING**
Risk to life due to high magnetic fields

A magnetic field of more than 0.5 mT (5 Gauss) is life-threatening for people with pacemakers or active metal implants. Exposure to more than 8 T can cause damage to health. Duration of exposure (8 h/day) above the limit of 200 mT can cause damage to health. Ferromagnetic tools in the magnetic field are significantly hazardous. Disks and electronic devices may be damaged.



- ▶ Mark the magnetic field of more than 0.5 mT (5 Gauss) before start up.
- ▶ Keep people with active medical implants or heart pacemakers away from the 0.5 mT (5 Gauss) area.
- ▶ The permanent workplace of employees must be outside the 0.5 mT (5 Gauss) area.
- ▶ Do not stay or work at magnetic fields of more than 8 T.
- ▶ Prevent exposure of more than 200 mT for more than 8 h/day.
- ▶ Keep disks, credit cards and electronic devices away from the identified area.
- ▶ Do not use ferromagnetic tools or items within the identified area.
- ▶ Only use non-ferromagnetic transportation dewars or pressure cylinders for the cryogenic agents.
- ▶ Only use non-ferromagnetic ladders or steps.
- ▶ Remove magnetic items (jewelry, watches, pens etc.) before carrying out maintenance work.

 **WARNING**
Danger of injury or material damage due to strong magnetic fields!

Injury or material damage may result due to the strong magnetic fields that can draw metallic objects towards the magnet.



- ▶ DO NOT locate the instrument next to large iron-containing objects or near moving metallic objects.
- ▶ DO NOT place any iron-containing object on the minispec magnet unit. Be aware that the magnetic field can erase magnetic recording media such as computer diskettes or credit cards.
- ▶ DO NOT place these items or clothing containing these items on the magnet unit.
- ▶ Leave the dust cover on the probe canal when the instrument is not in use.

5.2 Installation of the minispec mq20 Toothpaste Analyzer

The minispec mq-Series consists of 2 units plus a control PC:

- Magnet Unit, containing the magnet system and the probe assembly
- Electronic Control Unit with the NMR electronics
- Standard PC user interface for measurement control, data processing, etc.



Figure 5.2: The minispec Magnet Unit (left) and Electronic Control Unit (right).

A number of optional accessories can be added and adapted for use: electronic balances, auto sampler, temperature control baths and variable temperature control units, etc.

5.2.1 Unpacking the System

When unpacking the instrument ensure that all components listed in the packing list are part of the delivery.

CAUTION



Danger of property damage due to improper handling.

The shipping container must remain in an upright position at all times. It has two compartments separated by a wooden plate: an upper part, which contains the Electronic Control Unit, and a lower part containing the Magnet Unit. The magnet unit is secured to the shipping container from below with four bolts.

- ▶ DO NOT tilt the container when removing these bolts.

CAUTION



Accident or material damage hazard from falling or tilting instrument

Instrument may fall down or tilt during installation, retrofitting, dismantling, or while moving on a cart.

- ▶ Use the carrying handles during lifting.
- ▶ When a table or cart is used, it should meet the requirements in the pre-installation manual.
- ▶ The instrument should be secured to the cart or table.

⚠ CAUTION



Risk of injury from lifting heavy objects.

The unit is very heavy and may lead to injury when lifting.

- ▶ Do not attempt to lift the unit over the edge of the carton, remove the carton first.
- ▶ Do not attempt to lift the unit on your own or without necessary precaution against injury.
- ▶ Use a hoist if available.
- ▶ Follow the step-by-step instructions in the installation section of this manual.

To unpack the system:

1. Use a 13 mm wrench to remove the four bolts from the bottom of the container.
2. Remove the shipping straps and open the container.
3. Remove the packing material from around the Electronic Control Unit.
4. Remove the Electronic Control Unit from the container, together with the wooden plate that it is mounted on (do not tip!). Remove the four mounting bolts from below the plate using a 13 mm wrench. Once loose, remove the Electronic Control Unit and set it in a safe location.
5. Remove the packing material from around the Magnet Unit. Remove the retaining screws or nails from the bottom of the wooden pallet and **detach** the shipping carton.
6. While keeping it level, carefully lift the Magnet Unit from the pallet using the handles on either side, and place it on a sturdy cart or benchtop.



When using a hoist, make sure the straps are capable of carrying the magnet's weight and are attached in such a way that the magnet cannot fall, slip, topple or turn while being carried.

7. Once the magnet has been placed in its desired position, the handles can be retracted. While keeping the handles pressed down, push them below the case (see figure, arrows 1 and 2).

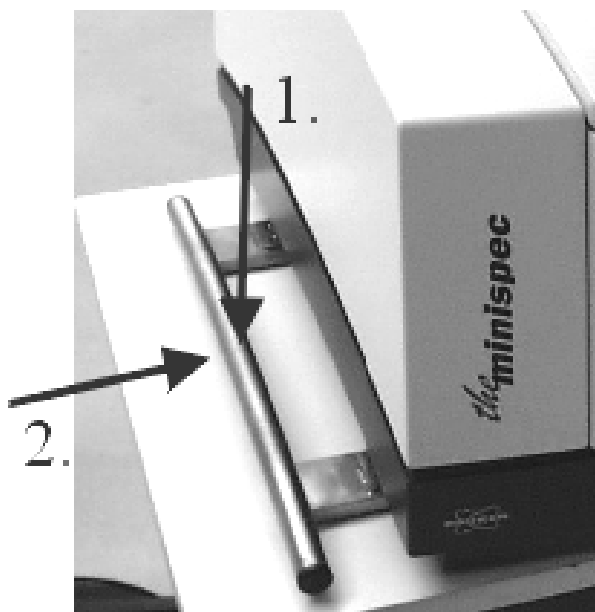


Figure 5.3: Handles on the Side of the Magnet Unit

8. Remove and retain the clear plastic dust covers from each component of the minispec and inspect them for damage.
9. If either unit appears to be damaged, contact your BRUKER representative immediately.

Due to accessories, consumables or optional units packaging may vary. Bruker will make every effort to deliver the instrument damage free. Therefore, packaging needs to be adapted to the specific customer order. Due to safety regulations, the system may be packed with additional shielding elements or may be declared as dangerous goods.

5.2.2 Electronic Control and the Magnet Unit Connections

The connectors are located on the bottom of the back planes. Connect the two units as shown in the figures below:

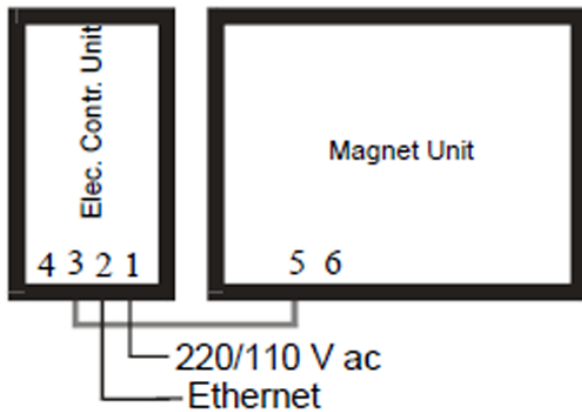


Figure 5.4: Electronic Control and Magnet Units

1.	Main power input.	3 to 5.	Connections to the units.
2.	Ethernet connection.		

Here is an expanded view of the connections:

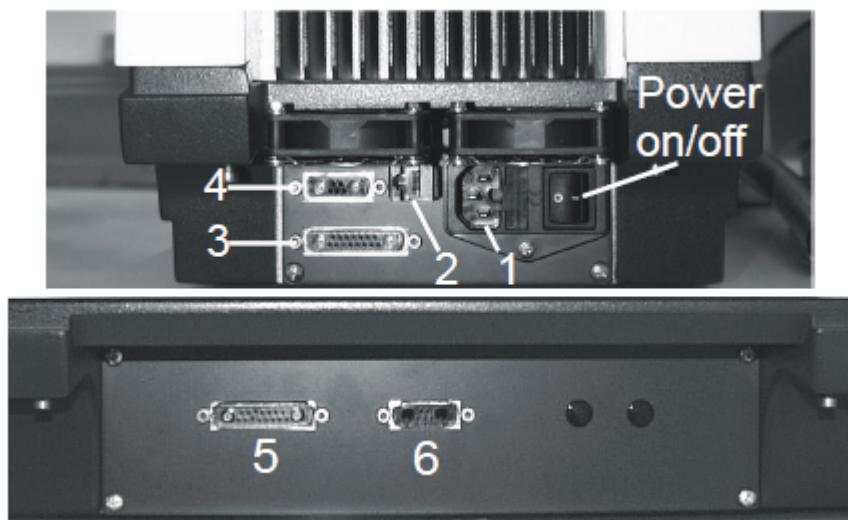


Figure 5.5: Back Planes of the Electronic Control Unit (top) and Magnet Unit (bottom)

1.	Mains Power Input	4.	Interface to Gradient Unit
2.	Ethernet (10 Base T) Connection	5.	Interface to Electronic Control Unit
3.	Interface to Magnet Unit	6.	Interface to Gradient Unit

5.3 Interpretation of the LEDs

Users receive continuous indication of the status of the different units in the form of light emitting diodes (LEDs), which are built into the front panel of the units.

5.3.1 LEDs for the mq20 Toothpaste Analyzer

Electronic Control Unit

Right LED, connection status indicator:

- ON (green): PC communication to the Electronic Control Unit is OK.
- OFF: No communication between the Electronic Control Unit and the PC.

Left LED, status indicator:

- ON (green): The Electronic Control Unit is working.
- OFF: The Electronic Control Unit is not working.

Magnet Unit

Right LED, indicates the magnet temperature status:

- RED: Pre-heating.
- YELLOW: Transition to normal heating.
- GREEN: Temperature is OK.

Left LED, connection status indicator:

- ON (green): Communication between the Electronic Control Unit and Magnet Unit is OK.
- OFF: No communication between the Electronic Unit and Magnet Unit.

5.4 Calibration Samples Hatch and Probe Exchange

The Magnet Unit cover has two outer hatches or doors.

- The first one is on the front panel of the unit and can be used to contain the calibration samples. Pressing on the upper part of the hatch will unlock and open it.
- The second is the top hatch, which allows access into the minispec magnet compartment and permits quick and tool-free exchange of probes.

To replace a probe the hatch at the top of the Magnet Unit must be opened:

1. Release the front hatch to expose the red button in the front of the unit.
2. Press the red button to release the top latch and open the hatch as far as it will go.
3. A second hinged lid, blue in color, will become visible. Lift this lid up and lean it against the outer hatch.

! WARNING



Danger of injury due to falling lid

The hinged lids may close unexpectedly during probe exchange causing injury to hands or fingers.

- ▶ Ensure that the gas spring on the outer lid is operating correctly.
- ▶ The blue inner hinged lid does not have a gas spring, use extreme care when exchanging the probe assembly.

4. The probe assembly is fixed with two quick-release fasteners. To release the fasteners, lift up the D-rings until they snap into a vertical position, then use them to rotate the fastener posts until released (refer to the figure below).
5. While grasping the D-rings, carefully pull upward to loosen the preamplifier connection under the mounting plate, then raise the assembly (mounting bar with probe and preamplifier attached) out of the magnet gap.

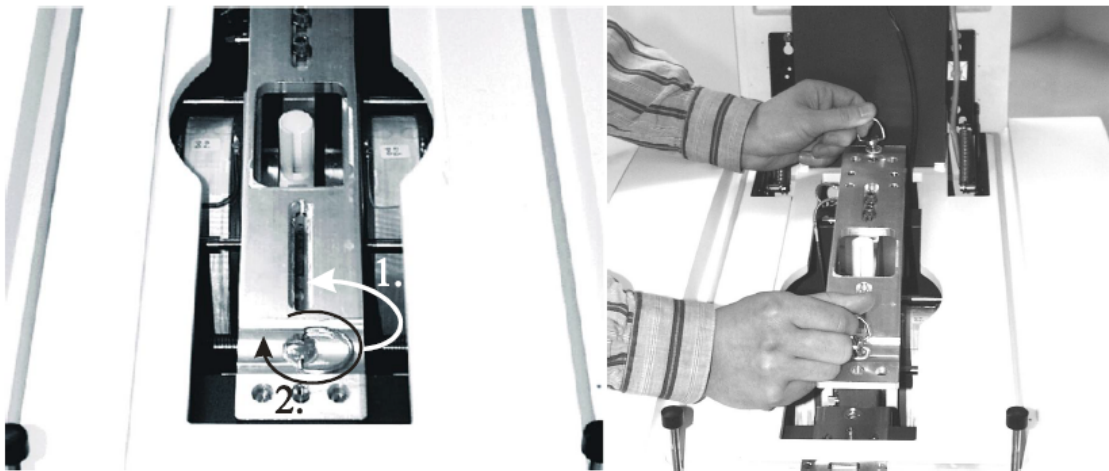


Figure 5.6: Ring of the Quick-Release Fastener (left) and the Raising of the Probe Assembly (right)

1.	Rings
2.	Rotating the rings.
To open the fasteners, turn the rings (1) upward and rotate them (2)	

Replace the assembly by following the instructions in reversed order.

Intelligent probes were developed for the minispec mq-Series. When you exchange a probe, the software will read the most important parameters (pulse length, resonance frequency) from the probe itself. The software will prompt the user to confirm the settings. After temperature stabilization it is recommended to run the Daily Check procedure. In certain cases a fine tuning by running Update Settings may be beneficial.

6 Getting Started

In general, minispec systems which are delivered with a personal computer already have the minispec software installed and are fully pre-configured. In this case, the user can skip the software installation and configuration, and proceed directly to the operational part.

The mq20 Toothpaste Analyzer operates with the minispec Plus software and with the well-known minispec.exe software running in the background as an acquisition server. The practical use of the software is illustrated in [Running the minispec mq20 Toothpaste Analyzer](#) [▶ 33]. Moreover, the manual *minispec Plus Administration*, together with the *manual minispec Plus Classic*, provide further details on the minispec software GUI. These can be found on the minispec software CD/memory stick in the folder *Documentation*.

In general systems equipped with minispec Plus software do not necessarily need to start the minispec.exe software before using minispec Plus. If the system is properly installed, then minispec Plus can be opened without first opening the minispec.exe software. However in some cases (like when the system was not shipped from Bruker directly) it might be useful to first run the minispec.exe software to make sure there is a proper network connection from PC to the minispec, then afterwards switch to the minispec Plus program.

When a user provides their own personal computer, or if software needs to be reinstalled for use with the minispec, refer to the installation instructions below.

6.1 Software Installation

Execute the following steps if the PC has not been pre-configured for the minispec by Bruker.

Please note that for proper installation of the minispec software, PC system requirements apply. For minispec Plus operation, in addition to the specified Microsoft operation system version, which is required for minispec.exe software operation, Microsoft Office is required too. Each minispec software and software installation is released for one combination of Windows operating system and Microsoft Office version. Ensure that the correct combination is pre-installed on the PC. For further details, refer to the corresponding minispec Plus manual.

To install the software, the following steps are needed:

1. Insert the installation CD in your drive, or when using a memory stick, insert the stick in a USB port.
2. Open the Windows EXPLORER and check the media for a ReadMe.txt file. If a ReadMe.txt file is available, follow the instructions provided in this file.
3. If not, execute the *Setup* file with a double click or select the setup entry with the right mouse button and select **Open** in the displayed menu.
4. Follow the instructions in the *Setup* program.
 - ▶ The *Setup* program copies the files into the folder you specify during the setup procedure.
5. To start the minispec.exe software, double click on the minispec.exe file in the main folder. Alternatively, you can create a shortcut on the Windows desktop to the file minispec.exe.

Note:

Systems that are equipped with minispec Plus software will install this additional GUI program automatically. In this case an *.ini* file will carry the corresponding licenses and the installation software will recognize known licenses and install the software GUI accordingly.

6.2 Connecting the PC to the minispec for the First Time

6.2.1 Direct Cable Connection

1. If the minispec software is running (e.g. after installation), then close the software.
2. Connect the PC to the minispec using the blue crossed-wire UTP-cable, which is delivered with the minispec (10-Base-T with RJ45 connectors, see the figures in the section [Installation of the minispec mq20 Toothpaste Analyzer \[p 26\]](#)).
3. Power ON the instrument and computer.
4. If not already installed, use the **Network** entry in the Windows **Control Panel** to install a TCP/IP protocol on your PC. The exact procedure for adding the TCP/IP protocol depends on the Windows version that is used, refer to the Windows software documentation for a detailed description.
5. Select **TCP/IP Properties**. Confirm or enter the following entries (for the PC): IP-address: 192.168.1.2 Subnet-mask: 255.255.255.0
 - If other values are defined, alter them accordingly. Re-boot your computer.
6. Start the minispec.exe software on the PC.
 - Some program information will be displayed for a short time, after which a Welcome Box will be displayed. Entries in the select boxes indicate how the PC will attempt to connect to the minispec console and what applications will be loaded.
7. Connect to the minispec unit (mq20 Series) using the indicated serial number (e.g. NF3000) by clicking **OK** in the displayed Welcome Box.
 - Communication is attempted from the PC software over the TCP/IP to the CPU/Ethernet controller in the console at the default IP address 192.168.1.1. Connection is indicated at the top status line with a message, for example: **Connected to NF3000**. The IP address of the console will be displayed in a small box on the bottom edge of the program window.
 - If the connection with the default serial number (here e.g. NF3000) cannot be established, retry using the IP address 192.168.1.1 instead of the default NFxxxx from the Welcome box settings.
8. If the connection still fails, make sure the cable is a crossed-wire twisted pair cable and that it is connected properly.
 - If connection still does not succeed, then the problem may be due to incorrect IP addresses or Subnet mask for the PC or the minispec. Normally the minispec console is shipped with the default IP address set to 192.168.1.1 and a subnet mask of 255.255.255.0. However, in some circumstances the minispec console may be set to other values (e.g. if a minispec has already been installed on a network, whereas another IP address will be needed, or a PC is being exchanged, or the software had to be reloaded on a fresh hard disk).
 - If a connection cannot be established and the setting of the console IP address is suspect, the Internet web browser page (service interface only) contains information (see **Help** menu) on how to reset the IP address, however please check with your local Bruker support for more details, if necessary.

6.2.2 Connection to a Network

A direct connection of the PC and minispec using the blue crossed-wire UTP cable is recommended. When a connection to a network is desired, a second network card will help to establish such a connection. The second network card allows the PC to be connected to the network, while the direct connection from the minispec to the PC is still in place.

7 Running the minispec mq20 Toothpaste Analyzer

7.1 mq20 Toothpaste Analyzer On Temperature

Once all LEDs on the mq20 Toothpaste Analyzer have switched to green, the system is ready to run.

The PC that has been started will pause at the Windows log-in window. When configured by Bruker, no password has been entered and the user may proceed by pressing **Enter**. The PC will then finish the boot-up process and show the minispec Plus icon on the desktop. Besides the software icon, a link to the “minispec documentation” folder is also on the desktop.

7.2 Running minispec Plus Software

Double-click on the minispec Plus icon to start the software. The software will start and come to the log-in screen.

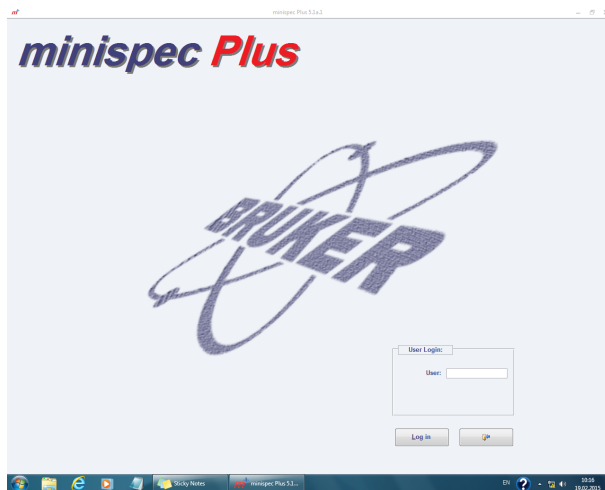


Figure 7.1: The minispec Plus Log-in Dialog

To get full access to all the menus of minispec Plus, type **ADMIN** and press the **Enter** button.

You will now be transferred to the main menu of minispec Plus.

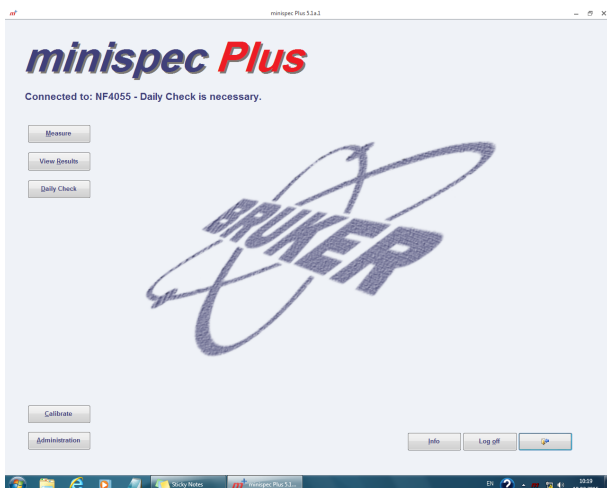
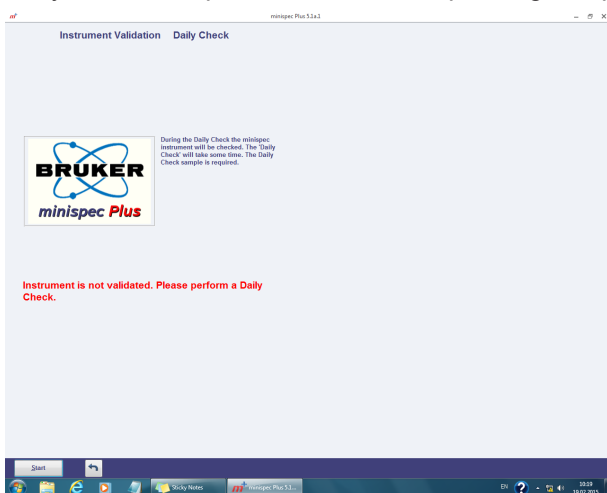


Figure 7.2: The minispec Plus Main Menu

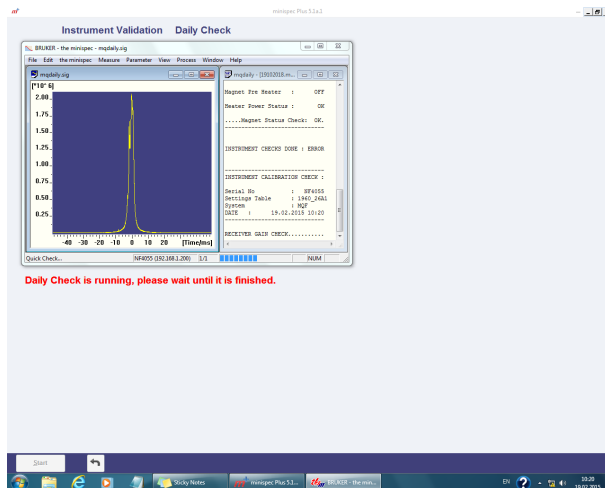
7.2.1 Daily Check

As a first action, choose to run the **Daily Check** function to validate the mq20 Toothpaste Analyzer system. The software will now guide you through the procedure, requesting the Daily Check sample. Insert the corresponding sample with care into your NMR system.

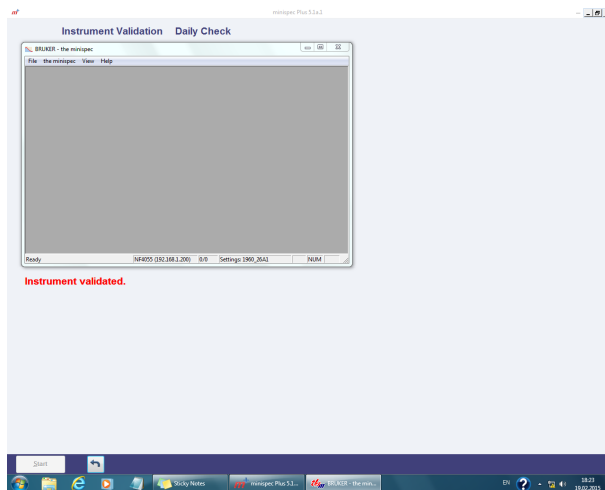


Finally the test should conclude and the instrument should be valid for 24 hours. In case there is a Daily Check failure, it is recommended to run the *Update Settings* procedure and to follow the corresponding instructions. In any case if the *Update Settings* routine does not run automatically, the Daily Check procedure has to be repeated.

During Daily Check, the system runs a number of tests, all following one after the other.



If all the tests passed, the software will indicate this accordingly. The corresponding message will also be displayed in the main menu.



7.3 Calibrations

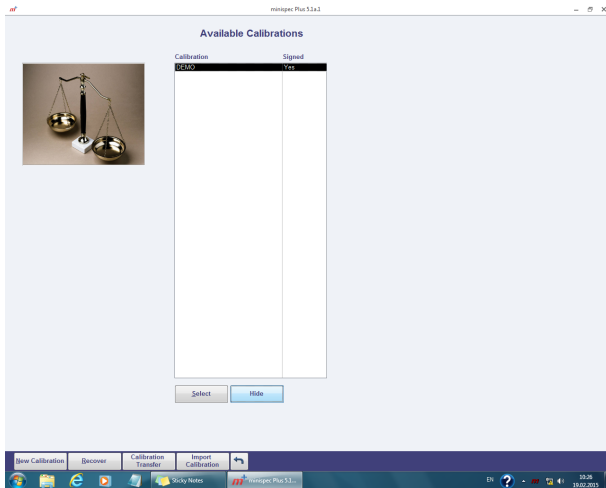
TD-NMR is a secondary technique and as such the Toothpaste Analyzer needs to be calibrated with reference standards.

For all other applications the customer will need to calibrate the system with their own reference standards. Typically 4-6 standards with known reference values are needed per calibration line. In most cases the mq20 Toothpaste Analyzers are calibrated in a classical way, i.e. the NMR signals of FID or Hahn-echo (or both) are considered and the corresponding amplitudes are correlated with the sample properties.

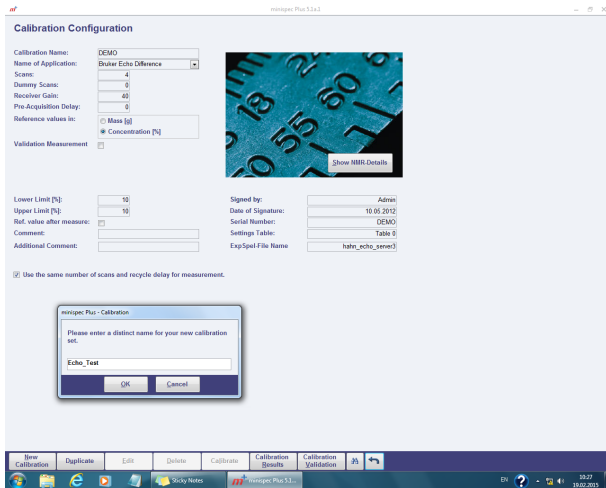
For different types of samples (like different types toothpaste or mouthwash) the user may need to create different calibration lines, one line per type of sample. It is recommended to name the calibrations accordingly.

Running the minispec mq20 Toothpaste Analyzer

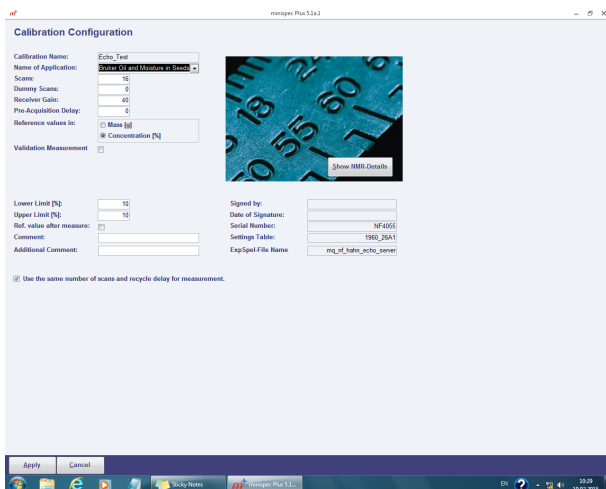
The user may choose the **Calibrate** button and proceed to the Calibration menu.



Create a new calibration and select a corresponding name.



Choose the corresponding Bruker pre-defined method and double-check the number of scans.

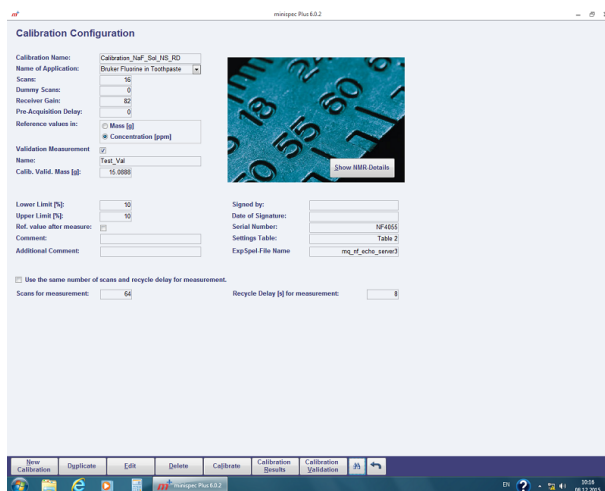


Running the minispec mq20 Toothpaste Analyzer

The user may also define a reference sample / standard that can be measured periodically by the instrument.



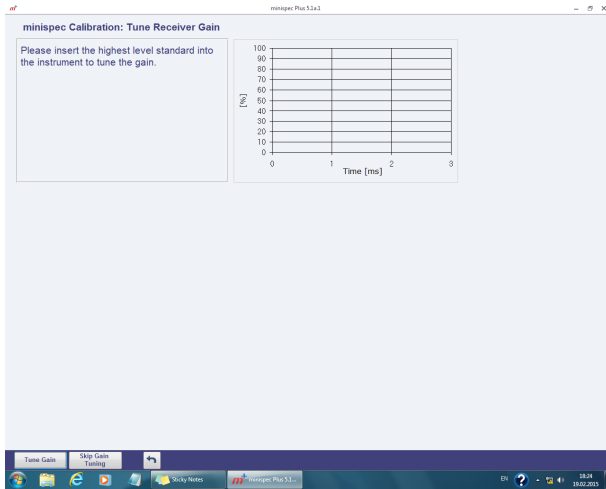
Moreover for the Fluorine in Toothpaste applications the number of scans (NS) and the recycle delay (RD) time may differ in the calibration and in the measurement part. Per default the same numbers are applied. However, also different parameters are possible.



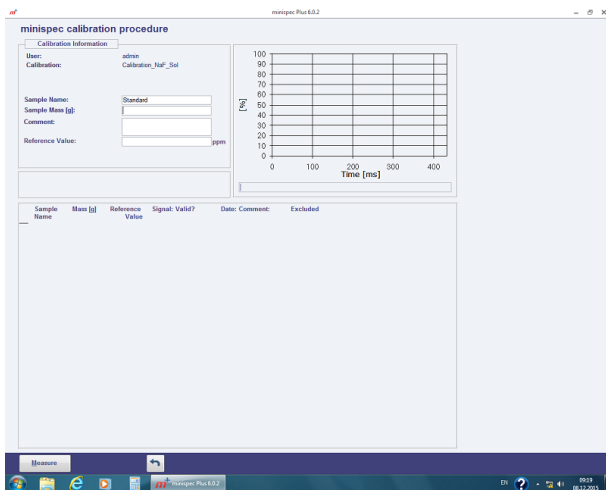
Users that need to create one calibration, but like to apply different parameter sets of RD and NS for the measurement, can create one calibration and duplicate it (including calibration points). This way only one calibration has to be established, but multiple sets of RD and NS can be applied for measurements of unknown samples.

Running the minispec mq20 Toothpaste Analyzer

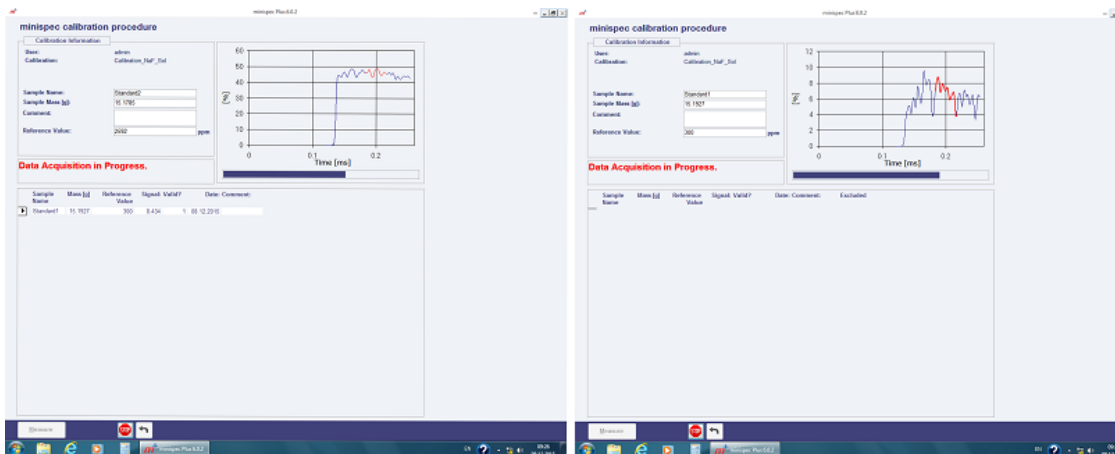
Start the calibration and tune the gain with the sample that has the highest NMR signal (typically the sample with the highest mass/highest concentration).



After Gain Adjustment one calibration sample after the other is analyzed. Depending on the application one or two parameters are calibrated. It is also possible to calibrate for 2 values simultaneously. Start with the first sample. As the Gain is fixed now, the order in which the calibration samples are measured does not matter.

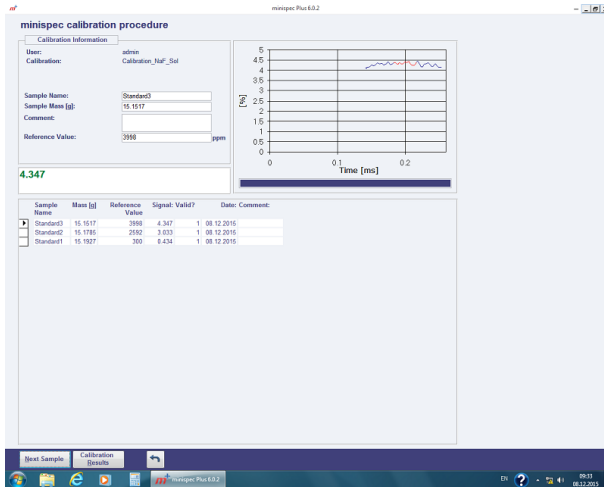


The calibration measurements are shown on the screen.

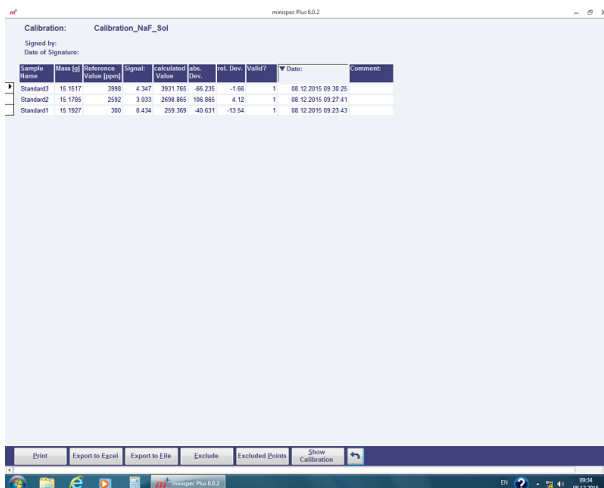


Running the minispec mq20 Toothpaste Analyzer

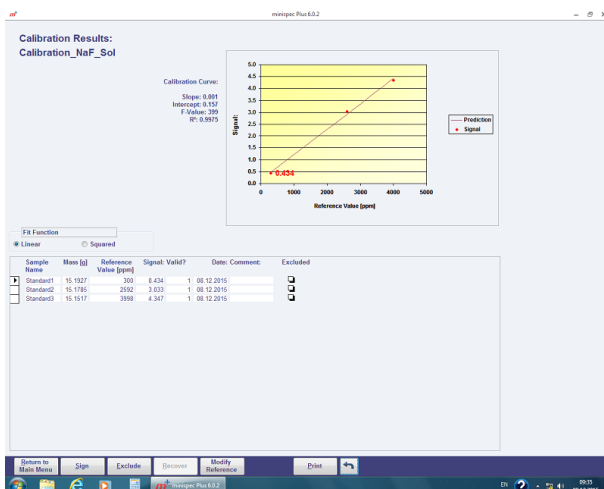
After the first sample is done, go on with further calibration samples. By default the software requests a minimum of 3 samples per calibration parameter. However often the calibration can be improved by including further samples, for example 5 or 6.



When the measurement of all the samples is completed, switch to the calibration results.



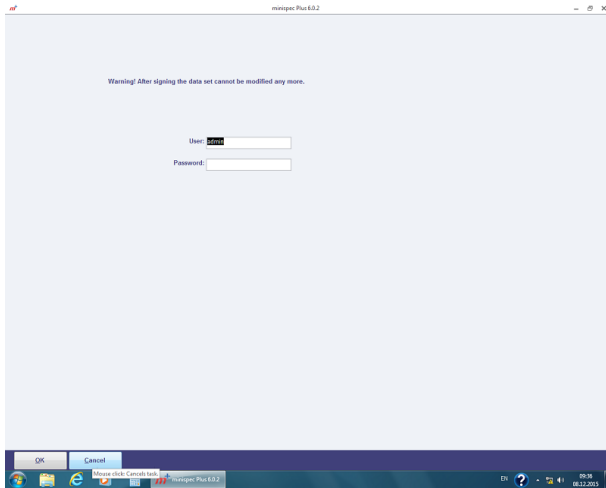
Afterwards move forward to the calibration line and inspect the correlation and other parameters describing the calibration quality.



Running the minispec mq20 Toothpaste Analyzer

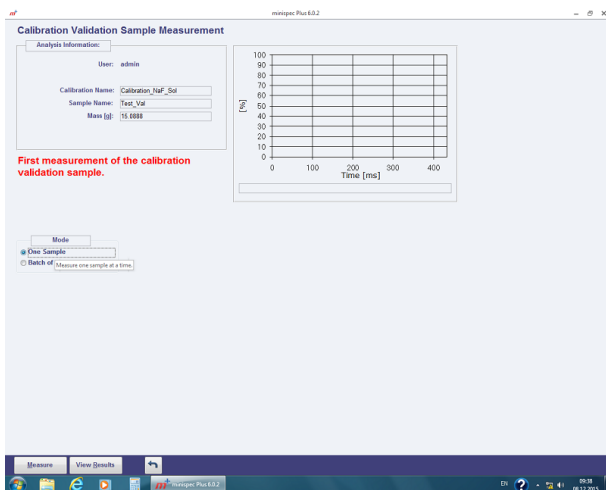
You might add samples or delete some, depending upon the needs and results of the calibration.

As the very last step and when the calibration fulfills the requirements, the calibration is signed. From then on it cannot be modified any further.

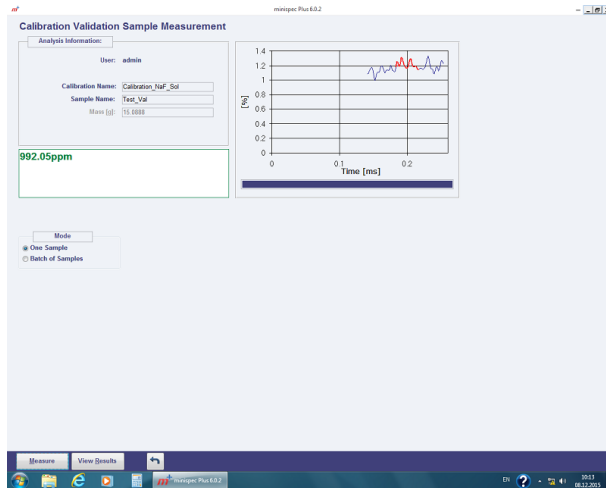


The only way to continue to work with this calibration is to make a duplicate of this calibration and also copying the calibration data points.

If the calibration is signed, one may leave the calibration section and switch to the Measurement part or the Calibration Validation measurements are executed. Here a defined sample is measured on a daily base and the results are recorded by the software for stability / performance check and also as a validation tool.



Once the Calibration validation measurement has completed, the result will be displayed on the screen and added to the list of Calibration Validation measurements for statistical analysis.

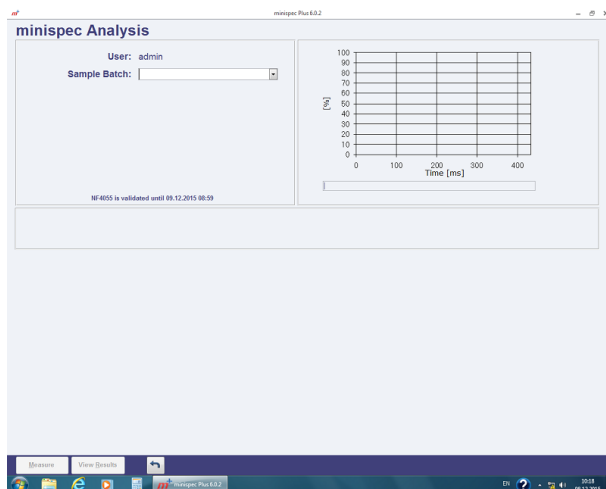


Afterwards switch back to the main menu of minispec Plus to start running measurements of unknown samples.

7.4 Measurements of Unknown Samples

When the calibration(s) is(are) finished, one may switch to the “Measurement” section. Here unknown samples are analyzed and measured according to the calibration curve selected by the user.

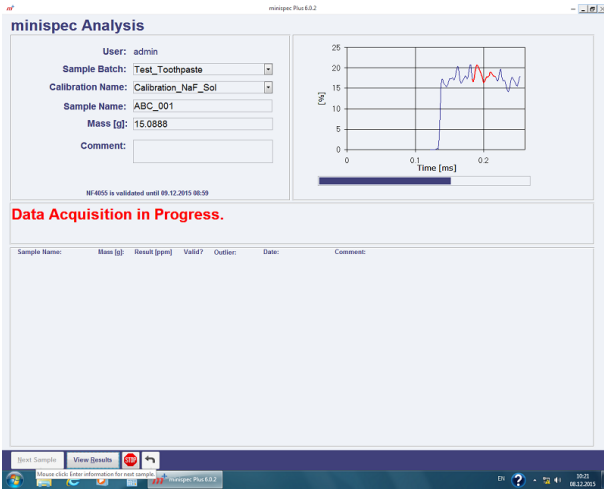
- Enter the batch name of the sample to be analyzed.



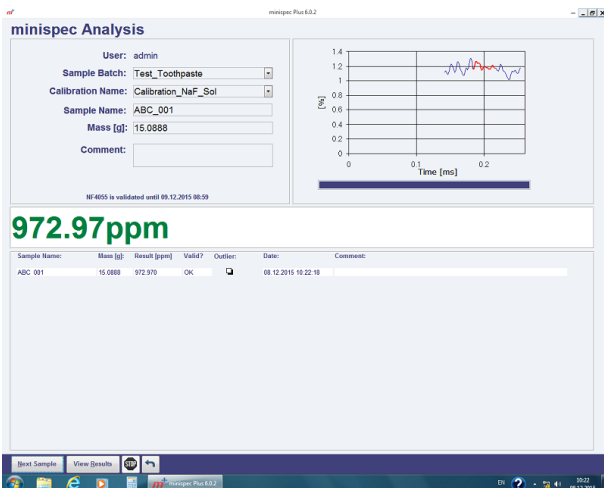
- Select the corresponding calibration method. Note: once batch and calibration are chosen, those are connected to each other. The software then remembers this connection when doing further measurements.
- Depending upon the method, as it has been defined during the calibration, the sample may need to be weighed. Enter the corresponding sample weight into the software or get the mass transferred from the balance connected.

Running the minispec mq20 Toothpaste Analyzer

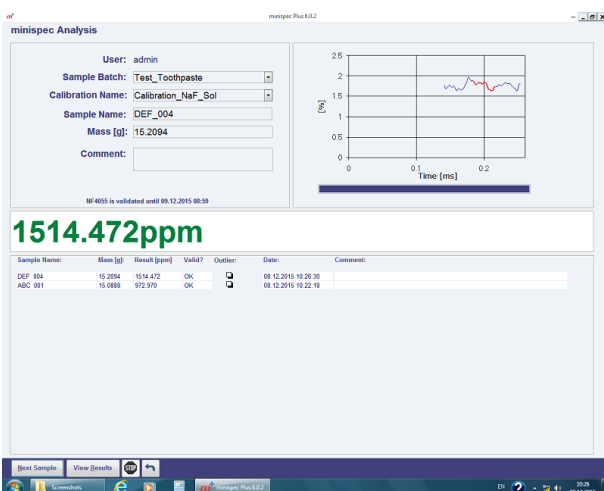
- Insert the sample into the NMR as instructed by the software and see the measurement progress.



- Once the measurement has completed, the result will be indicated and displayed on the screen in large letters and also on the results list.

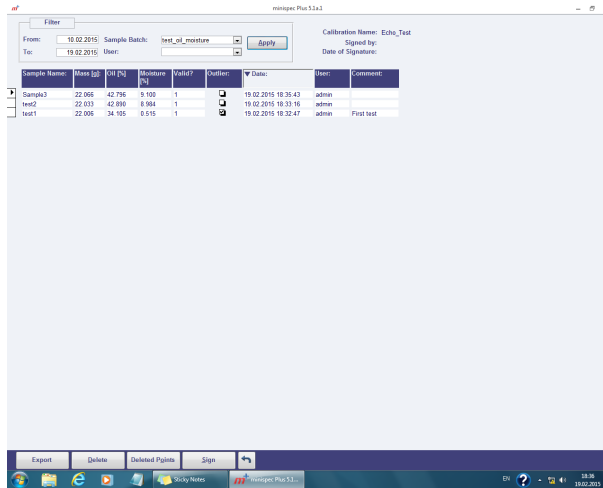


- Proceed with the next measurement or leave the Measurement menu.

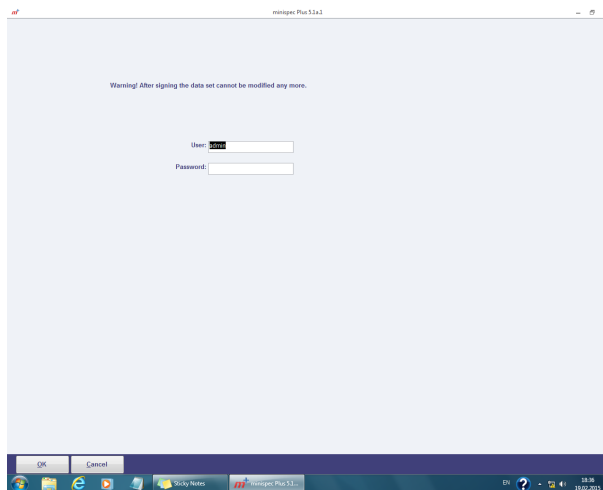


7.4.1 Result Handling

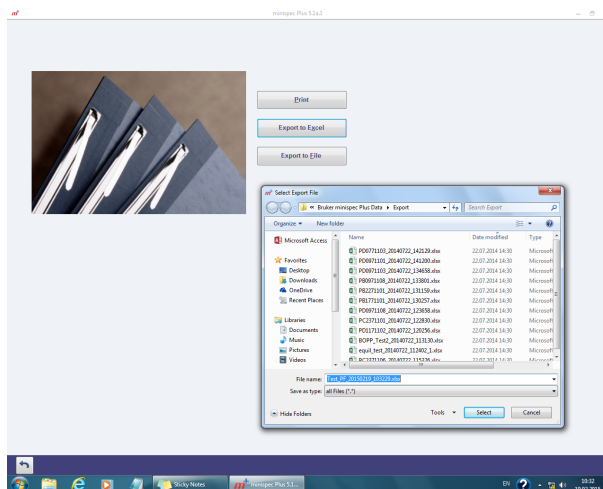
As unknown samples have been measured, the results are archived into the minispec Plus data base. Going to “Results” the data can be sorted / selected according to criteria such as time span, user etc.



Once selected one may sign the data (Sign function).



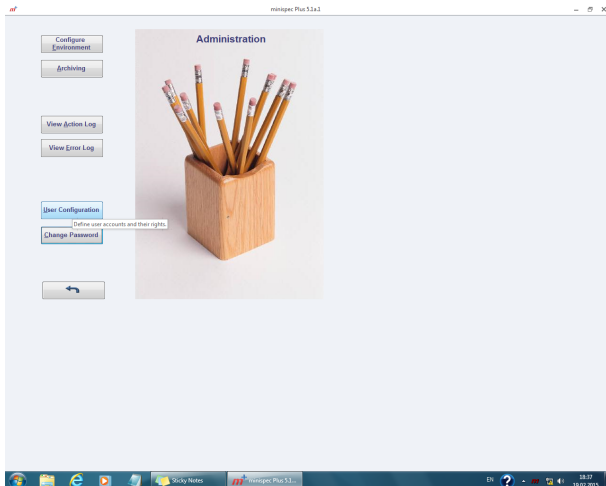
Or export data either to ASCII file or to MS Excel.



Exporting to MS-Excel templates are used so that the data is presented in the most clearly arranged way.

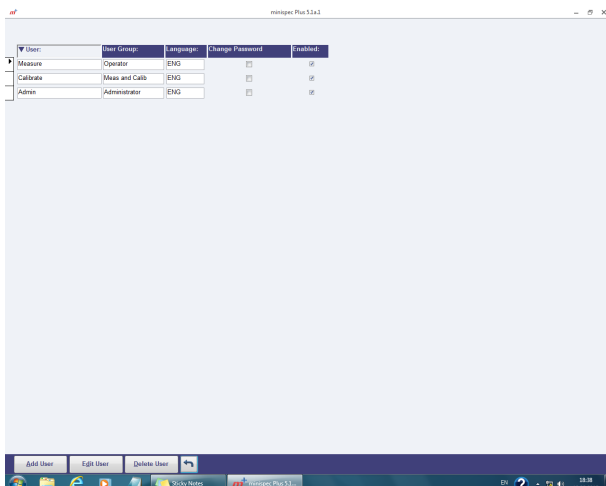
7.5 Administration Details

minispec Plus comprises an extensive Administration section. Also for this part counts: the most prominent features for your application should already be factory set and for most of the customers there will be no reason to access this part of minispec Plus. This part can only be accessed by a user with Administrator permissions.



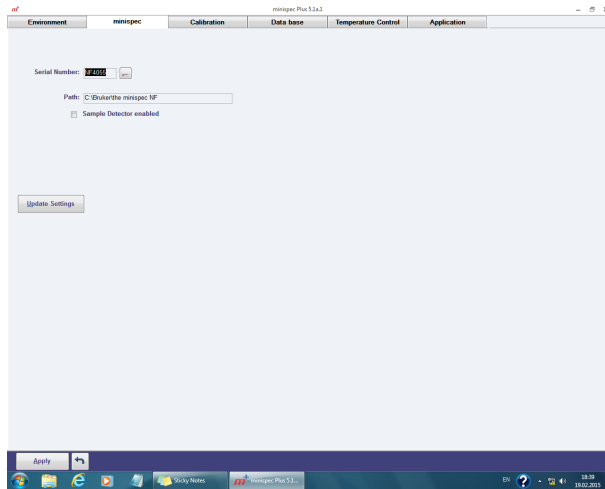
Not mentioned so far is the fact that minispec Plus runs with 3 permission levels:

- Administrators with full access.
- User with “Calibration” permission having access to the Calibration and the Measurement parts.
- User with “Measure” permission having access to the Measurement part.

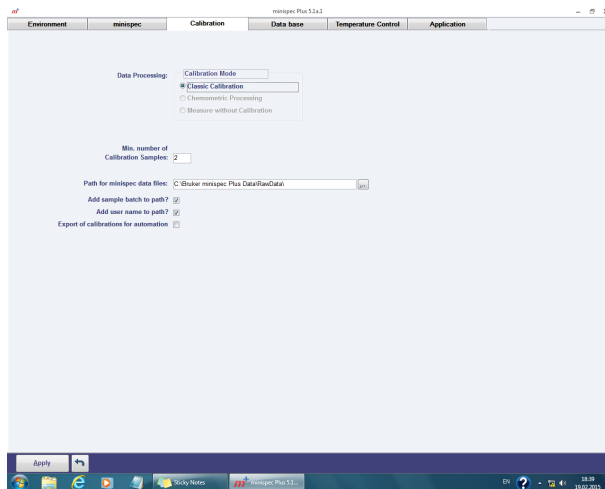


Running the minispec mq20 Toothpaste Analyzer

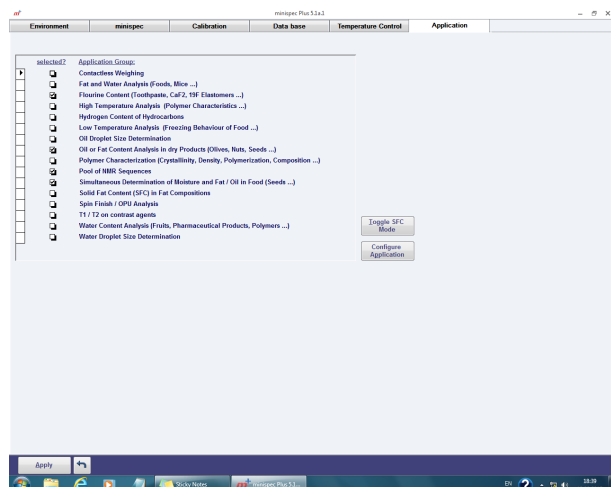
Moreover the minispec can be configured, please see the next screenshot. The minispec serial number as well as software installation path can be set. However – if the software runs for instance the Daily Check successfully, then there is no need to do any modification on those settings.



Calibration settings can be specified in minispec Plus, for instance the number of calibration samples to be measured as a minimum – despite the below example, we recommend a minimum of 3 calibration samples per parameter to be analyzed. This is also the default setting in minispec Plus software.



Finally application settings can be defined in minispec Plus – we recommend to approach this only in case your designated application cannot be selected within the calibration section of minispec Plus.



7.6 More Details

For further details on the calibration procedures, measurements, results archiving, administration please refer to the dedicated minispec Plus manuals dealing with those matters in much more detail.

The following manuals exist:

- minispec Plus Administration
- minispec Plus Classic Applications
- minispec Plus Chemometric Applications (optional)

For the mq20 Toothpaste Analyzer there exists an SOP (Standard Operating Procedure) that explains calibration and measurements.

8 minispec.exe Software for Diagnostic and Service Purposes

The software minispec.exe described in this chapter is typically not used by mq20 Toothpaste Analyzer users. For these users the software minispec.exe is mostly applied only for diagnostic and service purposes. Nevertheless a description of this software is provided here.

8.1 Configuration of minispec.exe

8.1.1 Wake-up State of the minispec.exe Software

When the software starts, a general dialog is displayed concerning the software version and the copyright. Then a Welcome Box opens and displays information about the configuration of the system. **The wake-up configuration is the configuration used with your last minispec session.** To continue with the same settings and start the minispec software click **OK**. If you want to change the settings refer to the next section, [Configuration of the Software, the Welcome Box](#) [▶ 47].

As already mentioned the standard software of mq20 Toothpaste Analyzer is the minispec Plus software. Corresponding manuals for this software are also available on the minispec CD/memory stick (for a list see [Introduction](#) [▶ 23]).

8.1.2 Configuration of the Software, the Welcome Box

The configuration of the system (*i.e.* the connected minispec, the selected applications, the analyzer type, and the calibration permission) can be inspected and edited via the Welcome Box. The Welcome Box can also be user configured. Users can control whether or not this box will be opened on program start. This is done by selecting or deselecting the entry **Welcome Box** in the pull-down menu **View** (see also [The View Menu](#) [▶ 65]). Deselecting the item **Display this Window on Startup** will also turn off the Welcome Box when the box appears on program start.

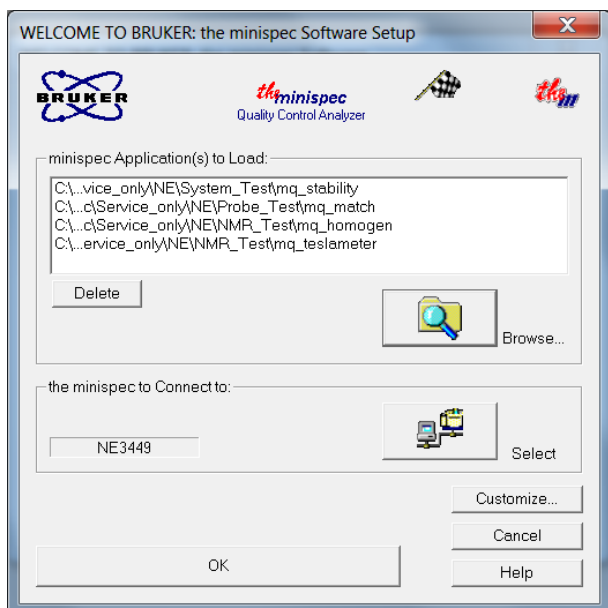


Figure 8.1: The Welcome Box

Several symbols, entries and buttons are displayed in the Welcome Box:

- Applications to be loaded (path and file name in the white field).
- Serial number of the minispec to be connected to (here: NE3449).
- Type of analyzer (here: **NMR Analyser**).
- The calibration permission is symbolized using a flag.



The wake-up application can also be selected for future program start-up. When the user has finished with the selections, the **OK** button is used to start the software.

To change the configuration, press the **Setup** button. The configuration is protected by a simple log-in mechanism.

- First log-in: Press the **Setup** button. Enter and confirm a password. The password will be saved automatically and **you will need it for every subsequent log-in. Handle the password carefully!** Only users who have permission to make changes to calibrations and software configurations should have knowledge of the password. If password protection is not desired, simply click **OK** or **<Enter>** without entering a password when the password entry box appears and confirm this in the following box.
- Later log-in: Press the **Setup** button and enter the password or click twice on **OK** if password protection is not used.

8.1.2.1 Selecting Applications and Connections

If you click **Setup** in the Welcome Box you will open the *configuration level* of the welcome dialog. This password procedure is described in the section above. Up to 20 applications can be selected to be loaded at the startup. To add applications to the list use **Browse...** to access a file selector box or use **Delete** to remove applications from the list.

To choose another minispec, use the **Select** button in the *Select minispec to connect to* field.

8.1.2.2 Changing Analyzer Type and Calibration Permission

Use the **Customize** button in the *configuration level* (see Selecting Applications and Connections) to open a dialog box. In this window the analyzer type and the calibration permission can be selected by checking the corresponding select box with a mouse click. Two options, RELAXATION TIME and the NMR analyzer, require a license number to operate. The number will be requested while connecting to the minispec (after you click the **OK** button in the Welcome Box) when one of these options is selected. If ordered with the system, this license number is issued on the first page of this booklet, labeled as the ExpSpel license number.

8.1.3 General Measurement Handling

The most important commands that are used to control measurements are: the **Run** command to start a measurement and the **Stop** command to interrupt a measurement in progress. Measurements can be started through a number of commands and by activating a number of software icons or features. For example, the general Run command can be started through the **RUN** button from the top icon bar or bottom button panel, from the pull-down menu **minispec**, or by simply pressing <Enter>. If the user has been given permission to perform sample calibrations, then the **Calibrate** command is available. Other forms of measurement are available for convenience, including a repetitive run command and a command to detect the raw NMR signal.

The following sequence of actions is generally followed in preparation for measurements:

1. Turn on your minispec and your PC (if they were turned off).
 - Wait until the console CPU/Ethernet process boots, as indicated by the lighting of the left (green) LEDs located on the front edge of the magnet and console.
2. Connect the PC to the minispec you want to use and configure the software, e.g. choose applications or an analyzer type.
 - Wait until the right LED on the magnet unit is green. This can take up to 3 hours to ensure optimum temperature stability. If the system was turned off for several days, or it was moved to another place, insert the calibration sample with 0% solid content and run the **Update Settings** routine.
3. Depending on the application you use (see your application description), start your measurement or calibration with the **Run** or **Calibrate** command.

The software includes full automatic tuning routines to adjust the measurement settings, for example pulse length, receiver gain, and magnetic field. You can tune these settings periodically to ensure the instrument validity over time.

The **Daily Check** command should be executed once a day to check the most important instrument settings and hardware functionality.

Every 24 hours, a yellow field on the right of the display will automatically indicate the need for another **Daily Check**. Running the **Daily Check** periodically ensures conformance to Good Laboratory Practice (GLP).

8.2 minispec.exe Standard Windows

The minispec user interface provides access to all menu functions, parameters, application programs, NMR signal display, and measurement results. In order to provide ready access to commonly needed views of the software operations, the screen is divided into different parts. To facilitate measurement handling and provide easy access to command commands, icon bars have been integrated into the user interface, and windows are available for the control of the measured signal (*Signal Window*) and the results (*Result Window*, *Statistics Box*).

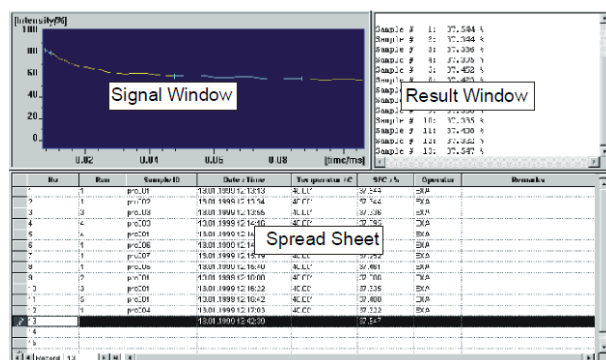


Figure 8.2: The View of the Signal Window, Result Window and the Spread Sheet.

For the pre-configuration of measurements and a simplified data output a *Spread sheet/ database Window* is integrated in some applications. Furthermore, the interface layout is adjusted to the individual needs of the analysis for most of the recent standard application fields.

The functionality of the windows, i.e. the possibility to move them, depends on the analyzer type you are working in. Repositioning of bars and windows is only allowed for the relaxation time and the NMR Analyzer.

8.2.1 The Signal Window

The Signal Window displays the measured NMR signal or the fit results graphically. In some analyzer configurations (NMR and Relaxation configurations) the display can be resized. Scaling of the data and the type of symbols used for the presentation of results can be adjusted from the **View** pull-down menu, again depending on the analyzer type. Data displayed in the **Signal Windows** can be saved to a file with the extension *'.sig'* using the command **Save** or **Save Copy As** from the pulldown menu **File**.

8.2.2 The Results Window

The **Result Window** is an output device for minispec applications that uses the ExpSpel command `print_line(RESULTBOX, ...)` to display a record of the evaluated result. Results are printed in the **Result Window** in ASCII text format. The results can be stored using the **Save** or **Save Copy As...** command from the pull-down menu **File**. Contents of the **Result Window** are automatically saved at intervals to a file with extension *'.mdt'*. To determine the parameters of the save procedure, use the command **Save Setup** in the pull-down menu **Save**.

Result files can also be read with a common text editor. One can select and copy the data to the clipboard as ASCII text with the command **Copy** in the pull-down menu **Edit**. To toggle between the normal and the large font result box, mark / unmark **Large Font Result Box** from the **View** menu.

8.2.3 The Spreadsheet Window

Spreadsheets have a number of functions in the minispec software:

- They allow a clear data input for the preparation of a measurement series.
- They give a listed view of the measurement results.
- They allow the data to be saved and post processed in common file formats (like MS ACCESS/EXCEL).
- A spreadsheet will be displayed automatically if it is implemented in the loaded application.

8.2.3.1 Execution of Spreadsheets

Normally the tables are executed after **RUN** is selected, beginning from row one to the end of the entries. But you can also measure single rows of the table by marking these lines and then selecting **RUN**. This may be useful if not all samples are prepared at the beginning of the analysis or if several measurements should be repeated.

8.2.3.2 Saving Spreadsheets

Spreadsheet data are saved automatically every time an entry is changed and any time the ENTER key is pressed. The filename is generated by the minispec software:

`<application>\MMMYY\DD\hh\mm\ss.mdb` with:

<application>: path of the current application

MMM: month (Jan, Feb, Mar, ..., Nov, Dec)

JJ: year (99, 00, 01, ...)

DD: day (01, 02, ..., 31)

hh: hour (00, 01, ...23)

mm: minute (00, 01, ..., 59)

ss: second (00, 01, ..., 59)

Saving in ASCII-format

The files can be saved alternatively in ASCII-format by using the **Save** or **Save Copy As** commands. The file name will be prompted in a standard file selector box, and the file extension used is ***.tab**. The first row of the data includes the headlines of the spreadsheet, the columns are spaced with a <TAB>. The ASCII tables can also be opened with standard text editors like NOTEPAD/WORDPAD or MS-EXCEL.

8.2.3.3 Monitoring

During a measurement the spreadsheet is updated by the minispec software every time a result is added. The tables can be opened on the measurement PC or any other PC equipped with the minispec.exe software or MS-ACCESS 2013. External monitoring of the measurement results via a network connection is therefore possible.

8.3 minispec.exe Menu Functions

The minispec software provides many opportunities for data display, data saving, and measurement handling. This chapter describes all functions that are available when the software is configured as *NMR-Analyzer*.

When the minispec is used only for specialized applications (Fluorine, etc.) many of these functions are unnecessary. In this case, the number of menu options is reduced to simplify the interface and make the software easier to use when the configuration is adjusted to certain analyzer types. Commands whose functionality may be not reasonable in some contexts appear grayed or may no longer be visible. The actions of the functions are described below.

8.3.1 The Bars

The minispec software menu structure and toolbars are designed within the framework of most standard Windows software to ensure intuitive handling (see the screen layout in the figure below). In the **Menu** bar actions can be selected via pull-down menus. Icons are also used for commonly used actions and remain visible in the **Standard** toolbar. Depending on the options selected, the most important commands for the execution and abortion of measurements may also be accessible through large icons on a **Measurement** toolbar, which is usually positioned at the bottom of the screen below the signal window. In the **Result** bar the numerical result(s) of the last measurement is displayed. The **Info** toolbar contains easily selectable buttons pertaining to the instrument status and parameter display, as well as a list of loaded applications. Finally, the status of the measurement and connections are summarized in the **Status** bar. The functionality of these items is described in the following sections in detail.

Adjustment of the bars (i.e. the possibility to move them) depends on the configuration of analyzer type you are working in. Repositioning of bars and windows is only allowed for the relaxation time and the NMR Analyzer.

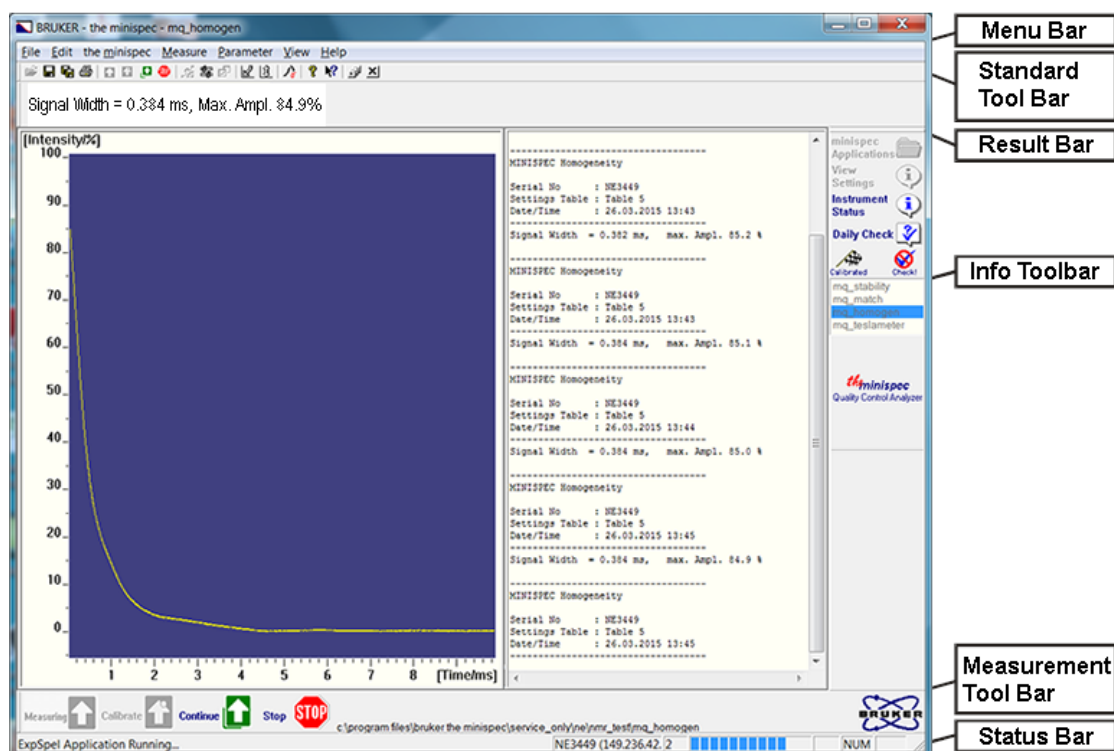


Figure 8.3: The Default View

The arrangement of the different bars supports an intuitive measurement handling.

8.3.2 The File Menu

The list of items in the **Menu Bar** depends on the active window. If the Signal Window is active, and an application is loaded, all entries are visible. The functions of the menu can be activated by a mouse click, or alternatively, using a keyboard shortcut (Alt + underlined letter).

File Edit Minispec Measure Parameter View Process Window Help

By activating the **File** menu all commands necessary for file handling are available (see figure). Their use is in analogy to conventional Windows software, you can open, close, save or print the contents of the selected windows (or the whole application).

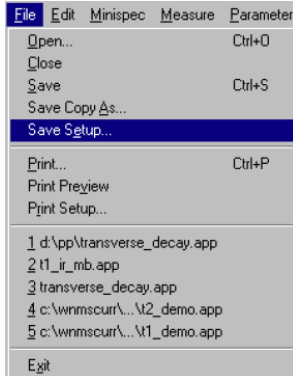


Figure 8.4: The File Pull-Down Menu

The Open Command

Shortcuts: Standard Tool Bar:



Keys: CTRL+O

Use this command to open an existing document in a new window.

One can select either:

- A complete minispec application (filename extension *.app*) consisting of maximum four windows: an editor window with ASCII-text in ExpSpel programming language; the Signal Window with the measured signals; the Result Box; and in some cases a spreadsheet.
- Measured signals (filename extension *.sig*) and measured data Result Boxes (file name extension *.mdt*) separated from its minispec application.
- Diagnostics files.

The Close Command

Use this command to close all windows in the active application or document.

If the focus is on one of the four views (windows) of a minispec application, the complete minispec application with all views will be closed.

Shortcut: Standard Tool Bar:



If you want to close all applications use:

Shortcut: Standard Tool Bar:



The Save command (Save As, Save Copy As)

Use the **Save** command to save the active document to its current name and directory. When you save a document for the first time, the minispec software displays the **Save Copy As** dialog box for input of a name. If you want to change the name and directory of an existing document before you save it, choose the **Save Copy As** command.

If you want to make a copy of an existing document, choose the **Save Copy As...** command.

Shortcuts: Standard Tool Bar:



Keys: CTRL+S

The Save Setup Command

The **Result** box displays results derived from the NMR data (after evaluation steps defined in the minispec application). Results are automatically saved as ASCII text at intervals (file extension: *.mdt*).

To set the parameters for the save procedure, select **Save Setup** from the result box file menu:

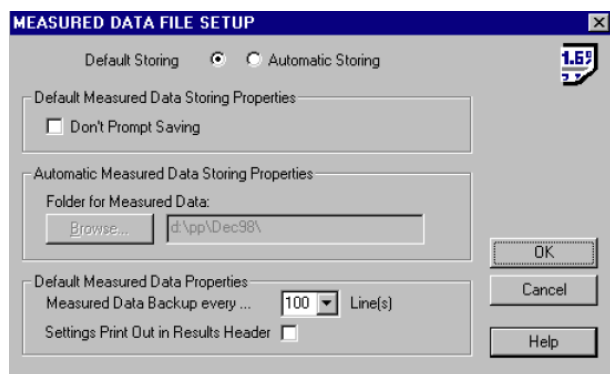


Figure 8.5: The Dialog Box for Data Saving Setup

Select **Default Storing** to backup every 100 result box lines of measured data to the file *<application>.mdt* in the current working directory.

When you attempt to exit the minispec application, the system will prompt whether the data should be saved, deleted or copied into another file.

Select **Don't Prompt Saving** to deactivate the prompt when saving, in which case the unsaved parts of the result box are then saved automatically. After reloading the minispec application, the results will be erased before the first new results are outputted to the Results box.

Select **Automatic Storing** for an automatic documentation of measured results.

The default path for saving is:

<current application directory>\<MMMJJ>\<ddhhmmss>.mdt

MMM: month

JJ: year

dd: day

hh: hour

mm: minute

ss: second

To modify the default path setting, select **Browse...** and define another folder. Default saving is every 100 lines and when leaving of the minispec application.

You can modify the default data saving behavior using **Measured Data Backup every...**

To include an output of the instrument and acquisition parameter settings, select **Settings Print Out in Results Header**. These settings are dependent on the minispec applications.

The Print Command

Use this command to print a document. It opens a **Print** Dialog Box, where you may specify the range of pages to be printed, the number of copies, the destination printer, and other printer setup options.

Shortcuts: **Standard** Tool Bar:



Keys: CTRL+P

The Print Preview Command

Use this command to display the active document as it would appear when printed. The main window will be replaced with a print preview window in which one or two pages will be displayed in their print format. The **Print Preview** toolbar offers options to view either one or two pages at a time, movement back and forth through the document, zoom in and out of pages and to initiate a print job.

The Print Setup Command

Use this command to select a printer and a printer connection. This command presents a **Print Setup** dialog box where the printer and its connection are specified.

The 1, 2, 3, 4, 5 Commands

Use the numbers and filenames listed at the bottom of the File menu to open the last five documents you closed. Select the document you want to open.

The Exit Command

Use this command to end your minispec session. You can also use the **Close** command. The minispec software prompts you to save documents when unsaved changes exist.

Shortcuts: **Headline**:



Keys: ALT+F4

8.3.3 The Edit Menu

The list of commands in the **Edit** pull-down menu depends on the active window (see figure below). In the following description all commands are included to ensure a complete documentation.

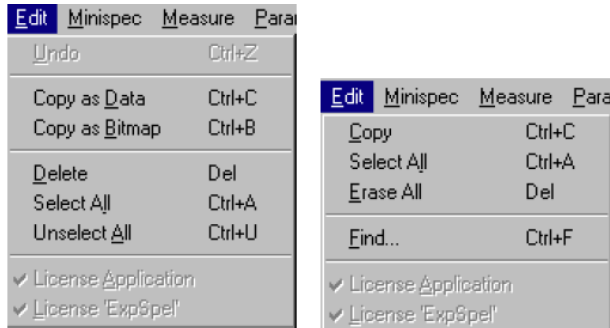


Figure 8.6: The Edit Pull-Down Menus for Different Active Windows

In the figure above, the left side shows the menu when the Signal Window is active, and the right side when the Results Window is active.

The Copy Command (Copy as Data, Copy as Bitmap)

Use this command to copy selected data into the clipboard. This command is not available if no data is selected. In the case of signals, data are copied as x-, y- (, z-) data in ASCII format, to allow an easy transfer to Excel. Use **Copy as Bitmap** from the **Edit** menu to copy signals as bitmap to the clipboard.

Shortcut Keys: CTRL+B (Copy as Bitmap)

Shortcut Keys: CTRL+C (Copy as Data)

The Select All Command

Selects the entire content of the Result Window. In the Signal Window this command is only valid in connection with calibrations.

Shortcut Keys: CTRL+A

The Unselect All Command

Unselects the entire content of the Result Window. In the Signal Window this command is only valid in connection with calibrations.

Shortcut Keys: CTRL+U

The Erase All Command

Erases the entire content of the Result Window, without erasing the data from the corresponding automatically saved measured data file.

Shortcut Keys: Del

The Find Command

Use this command for searching and highlighting words or text fragments.

Shortcut Keys: CTRL+F

8.3.4 The minispec Menu

All commands concerning instrument settings are included in this menu item. The commands for the magnet heater calibration and the receiver tuning are only available for BRUKER service personnel and therefore are grayed with a normal software startup. The list of commands depends on the status of the instrument (see figure). If there is no application loaded, the list is enlarged by the commands **Connect** and **Disconnect**.



Figure 8.7: The minispec Pull-Down Menu

The Connect/Disconnect Command

Once the system requirements for TCP/IP have been fulfilled, a software link between the minispec software running on a PC, and the minispec must be initialized. To establish the PC to minispec connection, select **minispec Connect**. Alternatively you can select **Connect** in the **Welcome** Box.

Enter the minispec Serial Number when prompted by the Connection Dialog Box.

The minispec Serial Number must be a valid entry in the MS-Windows 'hosts' file and have the form 'NBxxxx' for NMS- or 'NDxxxx'/'NFxxxx' for mq-systems.

The minispec serial number, which is the host name of the minispec, is used to identify the BRUKER minispec, controlled by the minispec software that is running on a PC in a TCP/IP network. It is recommended to add the IP address of the minispec and its corresponding Serial Number to the Windows 'hosts' file on the PC, if not already done by the software in the setup procedures described earlier (section Connecting the PC to the minispec for the First Time and Wake-up State of the minispec.exe Software).

To add the IP address and the serial number of the minispec:

1. Open the file **'hosts'** from the Windows folder (e.g. 'notepad').
 - In the case you work with Windows NT the hosts file is placed in the directory: `system32\drivers\etc\`.
2. Add a line in the following form to the file: <IP address><Space><minispec Serial Number> Where <IP address> is the network wide unique IP-address in the form 'xxx.xxx.xxx.xxx', and <minispec Serial Number> is the minispec Serial Number of the form 'NBxxxx', 'NCxxxx', 'NDxxxx' or 'NFxxxx'.

Use the command **Disconnect** from the menu to disconnect from the current minispec (e.g. prior to reconnecting to another minispec).

The Instrument Settings Command

Minispec instrument settings (see the figure below) are instrument dependent values such as the pulse lengths and the magnetic field at NMR resonance. Instrument settings differ from minispec to minispec, and must be tuned the first time a minispec is connected. You can use this command to change the settings of the instrument with manual input.

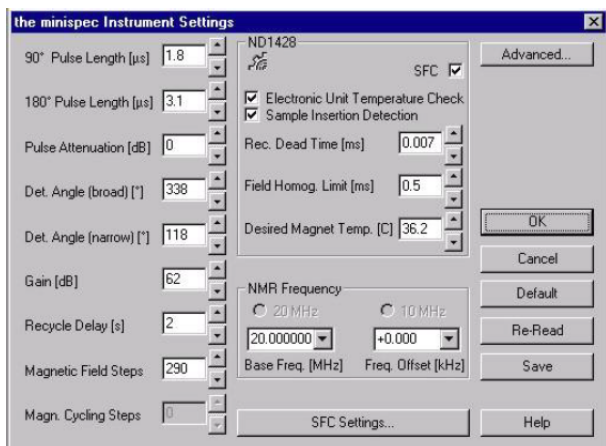


Figure 8.8: The minispec Settings Table



You can change the listed settings by manual input or with the Update Settings and Daily Check commands. Greyed entries are disabled.

Shortcut: **Standard** Tool Bar:



The settings that can be changed are shown in the figure above. If the **minispec Settings** are disabled on a connected minispec, customize your minispec software (through the Welcome Box) to access the calibration parameters.

The **Advanced** button in the settings table allows access to a list of instrument setting table names. The user may select the appropriate settings table to be used by the instrument, define custom names for the settings tables with the help of the **Customise** button (e.g. settings table name could be set to the probe name), and save the current entries under a new name.

The Tune Settings Command

When the minispec is first connected to the PC, all instrument settings must be tuned starting from default values. This can be done with the **Tune Settings** command. The routine will tune all settings of the instrument without user prompting. If the **Tune Settings** menu stays disabled on a connected minispec, customize your minispec-software to get access to the calibration parameters.

The Update Settings Command

A blue mark (validated) symbol on the right side of the **Info** Toolbar indicates a well checked minispec instrument.



An update of the instrument settings can be done periodically to check the instrument validity. An update may be necessary after the system has been relocated or the probe assembly has been changed. An instrument settings update is also recommended if the **Daily Check** fails.

The **Update Settings** routine is faster than the **Tune Settings** routine, as it starts from pre-adjusted settings (listed in the current instrument setting table). The Update Settings routine also the update of selective settings, whereas the **Tune Settings** command will tune all settings without further user prompting. For instrument optimization it is recommended using the **Update Settings** routine. For the initial tuning of the settings, the **Tune Settings** is the method of choice.

If the **Update Settings** menu stays disabled on a connected minispec, **customize** your minispec software (through the Welcome Box) to provide access to the calibration parameters.

The Daily Check Command

This option tests the instrument tuning but does not change the instrument settings. A quick check is recommended once a day (every 24 hours). A checkmark (Checked) in the **Info** Toolbar signifies a well-checked minispec instrument. An un-calibrated minispec instrument is indicated by a yellow mark (Check!).



To run the Daily Check, use the corresponding toolbar button or select **Daily Check** from the menu. If one of the checks fails it indicates that an instrument setting is not optimized. Use the **Update Settings** command to perform an update.

Shortcut: Info Toolbar:



The Balance Settings Command

One can connect a scale by serial interface to the PC's communication port in order to electronically transfer sample weight information (weights are necessary for some absolute applications). To enter the port configuration dialog, close all minispec applications, then select **Balance** from the **Setup** menu. Access is limited to users who have permission to enter the minispec main menu or calibration. Select the balance type, then the port to connect the balance to. Select the port parameters according to the settings on the scale. To set the standard values, click <Default> before leaving the Settings Table. To leave the Settings Table unchanged, click <Cancel>. To re-load old settings from file after modifications, click <Re-Read>. To leave the Settings Table with the new values, click <OK>.

The I/O Port Settings Command

One can connect serial interface devices, such as balances, thermostats or sample changers, to the PC's communication port. To get the port configuration dialog, close all minispec applications, then select 'I/O Port' from the 'Setup' menu. Note: To get the minispec main menu, the R&D level or calibration permission must be given. Select the port parameters according to the settings on the connected device.

The Licenses Command

Some special applications, like the digital pulse attenuation and the pulse shaping need to be licensed. Use this menu to open the license number input box, which prompts the user to input the license number. After a successful license procedure, the menu entry is checked and grayed.

Have ready the minispec instrument's system number (see Status Bar) and contact BRUKER for information or license numbers.

8.3.5 The Measurement Menu

All commands concerning the execution of measurements are concentrated in this menu item (see the figure below). Since these commands are used frequently, quick select buttons are available in the Measurement Tool Bar and key short cuts exist to enhance accessibility.

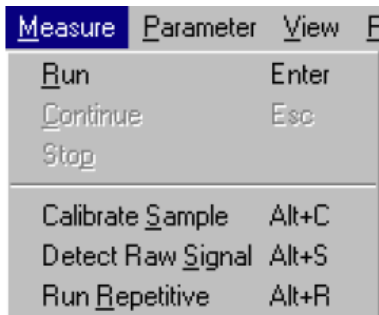


Figure 8.9: The Measurement Pull-Down Menu

The Run, Stop and Continue Commands

The **Run** command starts a measurement. If the Sample Detector is set **ON** (see: Instrument Settings Command) the measurement will be executed automatically with the insertion of the sample.

Shortcuts: Standard Tool Bar:



Measurement Tool Bar:



Keys: ALT+M or ENTER

To interrupt a minispec measurement, use the **Stop** command.

Shortcuts: Standard Tool Bar:



Measurement Tool Bar:



The command **Continue** is used to leave an intermediate process in order to continue running the minispec application (e.g. during a waiting time, a data acquisition or a fit display).

Shortcuts: *Standard Tool Bar*:



Measurement Tool Bar:



Keys: ESC

The Calibrate Command

A typical minispec application detects NMR signals of the sample and then calculates the result from the NMR signal. In some cases, the result can be directly calculated from the measured signal (e.g. a relaxation time). In other cases the minispec applications may use a reference method and calibration line to determine a sample property (e.g. oil, water or fat content) from the NMR signal. As a consequence, the NMR signal must first be calibrated with respect to sample properties. Select **Calibrate Sample** from the **Measurement** menu.

Shortcuts: *Standard Tool Bar*:



Measurement Tool Bar:



Keys: ALT+C

Running a minispec sample calibration leads the user through several steps. In most cases some application specific values (see: The Application Parameter Table Command) need to be defined.

To calibrate a minispec application, proceed as follows:

1. Prepare at least 3 samples of known content for measurement.
2. Perform test measurements with each calibration sample to adjust the acquisition parameters from the **Acquisition Parameter Table** in the **Parameter** menu. Adjust the receiver gain to the sample with the strongest signal.
3. Save the parameters and leave the parameter table.
4. Run the sample calibration and follow the prompts.

A flag in the **Info** Toolbar indicates a calibrated minispec application.



An uncalibrated minispec application is labeled with the following flag:



The Detect raw Signal Command

In some cases, for example to adjust the acquisition parameters, it might be helpful to detect the signal without data processing. This command was implemented to execute only the pulse sequence and acquisition without data processing or result output.

Shortcut: Keys: ALT+S

The Run Repetitive Command

With this command a measurement can be repeated several times at a regular interval.

Shortcut Keys: ALT+R

Select '**Repetitive Measurement Settings**' from the **Parameter** menu to determine the waiting time in seconds before a repetitive minispec measurement, the delay between two successive repetitions, and the maximum number of repetitive measurements.

8.3.6 The Parameter Menu

All parameters for acquisitions, applications and repetitive measurements can be defined with the assistance of the commands in this menu:

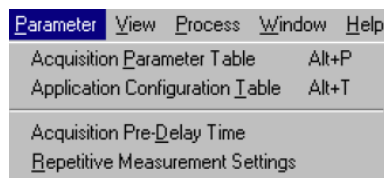


Figure 8.10: The Parameter Pull-Down Menu

8.3.6.1 The Acquisition Parameter Table Command

Acquisition parameters are application dependent values (for example receiver gain, recycle delay and number of scans to accumulate) that help define data acquisition. These values can be modified when a minispec is connected to the PC and a minispec application has been loaded. To modify acquisition parameters open the **Acquisition Parameter Table**.

Shortcuts: Standard Tool Bar:



Keys: ALT+P

To save the modifications to file, click <Save> before you leave the **Parameter Table**.



Note: Calibrated minispec applications will lose their calibration, if parameters are changed.

If the Save button stays disabled on a connected minispec, customize your minispec software to provide access to the calibrated application.

Experiment parameters that can be edited through the Acquisition Parameters menu:

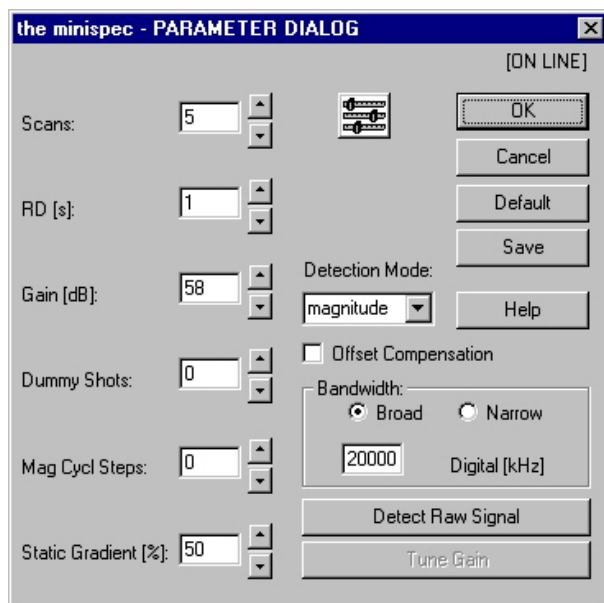


Figure 8.11: The Acquisition Parameter Table

Scans (1 – 32000)

Scans is used to set the number of times the NMR experiment should be repeated for signal averaging before the result is evaluated. The required number of scans depends on the signal strength, the desired signal-to-noise (which will limit the precision of the measurement), and the desired speed of analysis (time between scans is set by the Recycle Delay). Signal to noise improves with the square root of the number of scans. The remaining number of scans during an experiment is shown in the lower right corner of the display.

RD (seconds)

RD, or **Recycle Delay**, is used to set the time delay in seconds between repeated scans. The recycle delay is usually set just a little longer than the relaxation time of the sample. If the delay is deliberately made shorter than the sample relaxation time, one or more dummy shots can be made prior to the experiments in order to ensure that the first scan has the same history as all subsequent scans.

Gain (dB)

Gain sets the signal amplification in the receiver. For best results, set the gain such that the highest part of the signal reaches about 90% of the signal input range.



Note that the gain should not be changed for calibrated applications. If the range of input signals is too large for one gain setting, it may be better to have several calibrations for different gain settings.

Dummy Shots (0 - 32,000)

Pulses before the measurement can be made prior to the experiments (<Setup> <Program> Menu), in order to ensure that the first scan has the same history as all subsequent scans.

Mag Cycle Steps (0 - 2048 Steps)

The Mag Cycle Steps provides a method of improving the performance of the detection system for multi-scan measurements. Instead of accumulating all scans on resonance, the magnetic field is cycled symmetrically about the resonance in steps, their size depending on the field cycling range and the number of scans.

Detection mode (magnitude/real/imaginary/complex)

Sets the mode of signal detection. "Magnitude" detection calculates the root of the sum of the squares of the real and imaginary parts of the signal, which are recorded by the quadrature receiver. The "magnitude" mode is independent of the detection angle, and not as sensitive to off-resonance effects of the magnetic field, but does not include any signed information (i.e. is always positive). Data recorded in complex mode has a real and imaginary component and can be Fourier Transformed for viewing in the frequency domain (see [The Process Menu \[p 69\]](#)).

For applications requiring phase information (e.g. T1 relaxation), the in- and out-of-phase components can be measured separately using the "real" and "imaginary" modes respectively. If the detection angle and the magnetic field have been adjusted optimally, the real component will be at maximum and the imaginary component will be zero.

Digital Bandwidth (1-20000 kHz)

The Digital Bandwidth is used to set a digital filter. For very weak and noisy signals, the digital bandwidth should be set as low as possible without distorting the signal shape.

NF systems come with a digital filter which means that the dwell time is related to the setting of the digital filter. Changing the digital filter from the standard value in the application software may lead to non-sense NMR signals. Make sure the relation between digital filter and dwell is understood and set accordingly.

8.3.6.2 The Application Configuration Table Command

The most common minispec applications can be configured for the special requirements of the current measurement (e.g. whether the liquid or solid fat content has to be determined). The command opens a table where the application options can easily be edited.

Shortcuts: Standard Tool Bar:



Keys: ALT+P

The Application Configuration Table is optional, not all minispec applications need a sample calibration or configuration, thus the configuration table may not be available for these applications.

8.3.6.3 The Acquisition Pre-Delay Time command

In some cases a defined delay is desired between the time a sample is inserted and the time of measurement start (e.g. if time is needed to allow the temperature of the sample to equilibrate in the magnet). The **Acquisition Pre-Delay Time** command allows such a delay to be set. The waiting time is added to the recycle delay of the first scan of the data acquisition. Once a measurement is triggered, you can override the acquisition pre-delay and continue with data acquisition by selecting the **Continue** command.

8.3.6.4 The Repetitive Measurement Settings Command

Repetitive measurements require several control parameters. When this command is selected, a table appears where the following parameters can be specified: the waiting time in seconds before a repetitive minispec measurement begins, the delay between two successive repetitions, and the maximum number of repetitive measurements.

8.3.7 The View Menu

Each user can configure the screen for the special requirements of a measurement. With the help of the pull-down menu **View** one can adjust the arrangement of the different windows, the display of toolbars, the font size for the result output and much more. The list of available commands depends on the active window and the active application:

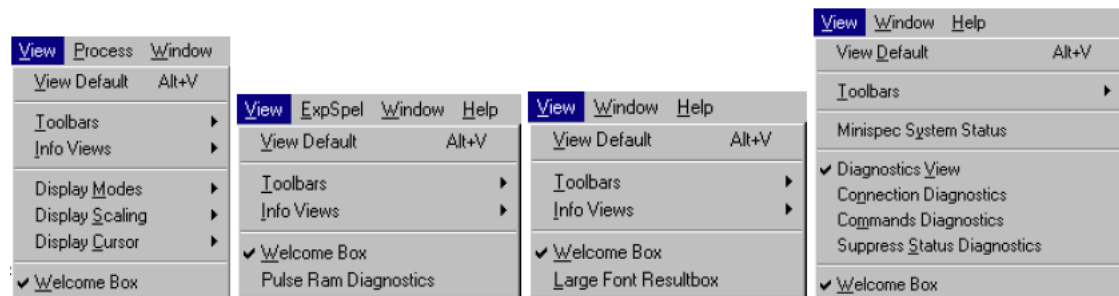


Figure 8.12: The View Pull-Down Menu

The View Default and the Toolbars Commands

The minispec software shows four tool bars: the Standard Tool Bar, the Result Bar, the Measurement Tool Bar and the Info Tool Bar (see the figure above). When the minispec software is configured as the Relaxation Time or NMR Analyzer type, all toolbars are docking toolbars. This means that the toolbars can be moved to any location on the entire screen by pressing and holding the left mouse key. The location can be outside of the minispec software main window, within the main window docked (e.g. on the left, right, top or bottom), or switched off entirely. To switch toolbars on and off, mark/unmark the corresponding toolbar in the minispec application menu **View**.

To get an impression of the toolbars and to restore the default screen select **View Default**.

Shortcut Keys: ALT+V

The Info Views Command

This command is subdivided into four parts:

1. **minispec Settings:** If you choose this item you will get a table of all minispec application relevant instrument settings and parameters.

Shortcut: Info Toolbar:

The function is disabled (grayed) if no minispec is connected.



2. **minispec System Status:** The user can get a real-time indication of the status of the minispec instrument, particularly:

- Magnet Unit temperature and status.
- Sample orifice status (sample inserted or not).
- Sample insertion detection (grayed if sample detection is set OFF).

- Transmitter power status.
- Heater power status.
- Electronic Control Unit temperature status (grayed if Control Unit temperature detection is set OFF).
- External Gradient Unit status.
- Possibility of attenuated and shaped pulses.

The entries are marked with a checkmark () when the corresponding item status is OK.

Shortcut: *Info Tool Bar*:



3. **Results Mean.** This function displays the Statistics Box (see figure), a window which allows general monitoring of measurement results. The Statistics Box contains:
 - Mean value.
 - Standard deviation.
 - Current data value.
 - Total number of data.
 - Maximum value.
 - Minimum value.
 - Difference between minimum and maximum value.
 - Graphic representation (Statistics “Meter”).

The window can be minimized with the double arrow in the upper right part of the box (see figure). Only the graphic view will be displayed in the minimized form. The green area in the graph displays the range of tolerance for the measurement, the vertical lines through the meter indicate the actual values, and the continuous broad vertical line represents the mean value.

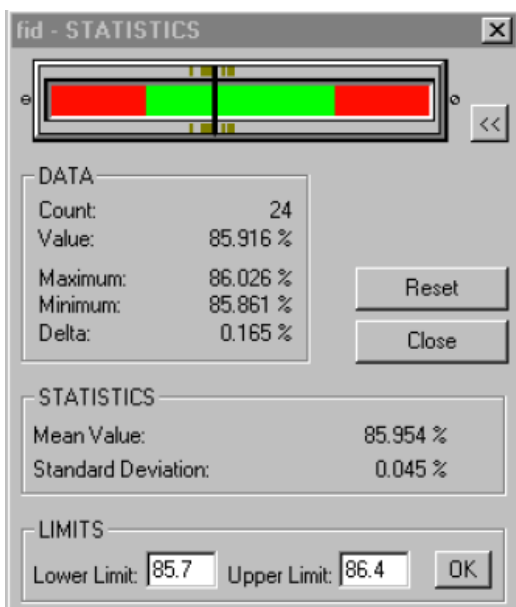


Figure 8.13: The Statistics Box

4. Fit Info: You can display a window containing all information of a current fit. An active Fit Window is marked with a check mark.

The Display Modes Command

Different display modes are available for the measurement signal. Possible modes are:

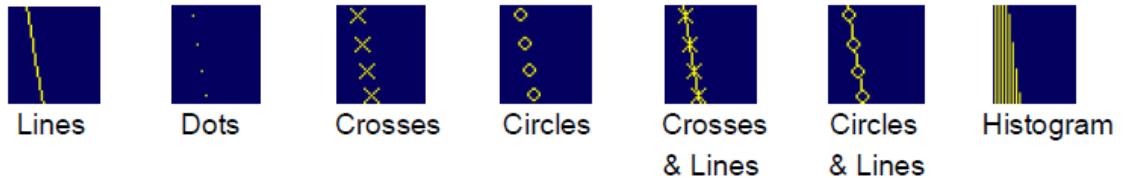


Figure 8.14: Display Modes

You can activate the desired display mode with a mouse click.

The Display Scaling and the Display Cursor Commands

There are various possibilities for the data and cursor display. With these commands the scaling of the Signal Window and the options for the cursor displays are adjusted. For easy handling the commands can be executed using short cuts. The following display operations are available:



Resets the display to the default view.



Adds a grid to the signal display.



Toggles between separate or overlapping displays of real and imaginary signals.



Toggles between **Full Scale** (the limits are the highest and lowest values to be displayed) and normal (100%) signal scale.



Zoom Scale on / off. To zoom, mark the signal with the rectangle cursor. Using the left mouse button you can toggle between the left/upper and the right/lower limit. The zoom range is defined using the right mouse button. To reset, use the right mouse button or click the Reset button.



Fix Scale on / off. Fixes the display scale (e.g. after zooming) and the display type if used before a measurement.



Data Cursor on / off. Allows the data cursor to be moved with the mouse or cursor keys. When activated, data point information is available in the Status Bar.



Distance Cursor on / off. Allow the mouse or cursor keys to be used to position the distance cursors. Use the left mouse button to toggle between the left and right distance cursor. Data points distance information can be found in the Status Bar.



Marker Cursor on / off. Use the mouse or the cursor keys to position the data cursor. You can observe data point information (and the distance from the fitted value) in the Status Bar. The field is only active if a calibrated data file for the application exists.



Note: Zooming, data, distance and marker cursors can only be used exclusively.

The Welcome Box Command

On the BRUKER minispec program start, the software wakes up with the Welcome Box (see also section Configuration of the Software, the Welcome Box). The Welcome Box offers the possibility of adapting some software settings to the user's purposes (e.g. selecting a minispec application or connecting a minispec). To switch off the Welcome Box, uncheck **Display this Window on Startup** in the Welcome Box. On restarting BRUKER minispec software, the last minispec connection and minispec applications will be reloaded automatically. One can deselect loading the minispec application after program start via switching off the option **Load Application on Startup** in the Welcome Box. You can also switch on / off the Welcome Box by marking / unmarking the **Welcome Box** command in the **View** menu.

The Large Font Result Box Command

The information in the Result Window can be displayed using two different font sizes. Marking this entry you will choose the larger font.

The Diagnostics View Command

With this command a window is opened up which displays various information for diagnostic purposes. These options are helpful for checking the instrument status, connections, and commands. Different diagnostics are available, depending on the active window. The transfer of the diagnostic information from the minispec to the PC, and the display in the Diagnostics View needs time and system resources, thus this command can be used to regulate performance as required.



Note: To ensure a failure-free operation use these options only for diagnostic purposes and not in the background for standard measurements. Unmark Diagnostics View and all diagnostic possibilities when they are not any longer required!

The Pulse Ram Diagnostics Command

This command is only available if the Editor Window is active. If you mark this command, information is printed about the pulse pattern of the NMR pulse sequence into the Diagnostics View.

The Connection, Commands and Suppress Status Diagnostics Commands

If Connection Diagnostics is marked, information will be printed about the connection between the minispec software and the minispec connected. With **Commands Diagnostics**, information will be printed about the data exchange into the Diagnostics View. Some status information about the hardware is requested every second. These requests take also place if the status has not changed during the last interval. For a clear and easy diagnostic it may be useful to suppress the printing using the command **Suppress Status Diagnostics**.



Some of the functions described might only be available in certain minispec.exe software versions.

8.3.8 The Process Menu

The **Process** item is only displayed when a Signal Window is active. Different commands for data processing are summarized in this pull-down menu:



Figure 8.15: The Process Pull-Down Menu

Within the context not all commands may be reasonable, in which case they will be grayed. The following series of built-in signal processing features are available:

The Fit Command

This command is only available in connection with calibrations. You can fit your calibration data and display the fit results (see **Info Views**, point 4).

The FFT, Magnitude, Power and Absolute Commands

A Fast Fourier Transform of measurement data will be performed using the **FFT** command. If the NMR signal is observed in complex mode (real and imaginary part of the signal) the **Magnitude** ($[\text{Re}^2 + \text{Im}^2]^{1/2}$) or the power spectrum can be calculated. From the real, imaginary or complex data, the **Absolute** values can be calculated.

The Signal Flip, and the Signal Swap Command

The signal can be mirrored with respect to an offset frequency of 0 using the **Signal Flip** command. The **Signal Swap** command exchanges the real and imaginary part.

8.3.9 The Window Menu

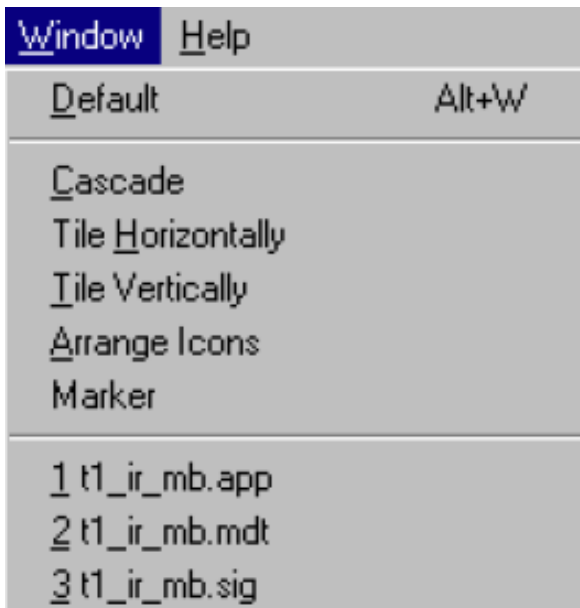


Figure 8.16: The Window Pull-Down Menu

Default, Cascade, Tile Horizontal and Tile Vertical Commands

You can arrange the windows (see figure) as **Cascade** in an overlapping fashion, or you may arrange multiple open windows **Horizontally** or **Vertically** side by side. To reset the window alignment, use the **Default** command.

Shortcut Keys: ALT+W.

The Arrange Icons Command

Use this command to arrange the icons for minimized windows at the bottom of the main window. If there is an open document window at the bottom of the main window, some or all of the icons may not be visible because they are hidden behind this document window.

The Marker Command

This command sets the Marker Cursor on / off. Use the mouse or the cursor keys to position the data cursor. Data point information (and the distance from the fitted value) is then available in the Status Bar. The window is only active if a calibrated data file for the application exists.

Shortcut Standard Tool Bar:



The 1, 2, 3,... Commands

Use the numbers or the mouse to select one of the listed windows at the bottom of the menu to set it into the foreground.

8.3.10 The Help Menu

For a user friendly handling the minispec software includes a detailed help function. You have the choice of different entries to receive help on your questions (see figure). Green entries in the help text are cross references to related topics. One may switch to them by clicking on the green text.

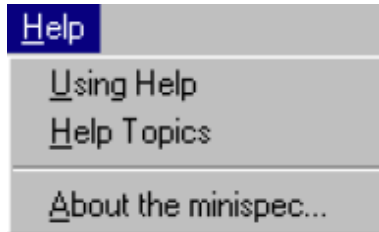


Figure 8.17: The Help Pull-Down Menu

The Using Help Command

A help box will be activated with information on how to use the different help options.

The Help Topics Command

This command will open up a dialog box where the topics you want information about are entered.

The About the minispec Command

Use this command to display the copyright notice and version number of your copy of the minispec software.

Shortcuts: Standard Button Bar: 

Additional Help Functions

While moving the cursor through the buttons, a short on-line help will be displayed describing the function of the button. At the same time a more detailed description is displayed in the left part of the Status Bar.

If you want an expatiated comment about menu functions, windows, commands or buttons use the **Context Help** command.

Shortcuts: Standard Button Bar: 

Keys: SHIFT+F1

When you select the Standard Toolbar's context help button, the mouse pointer will change to an arrow and a question mark. Click somewhere in the minispec software window, for example on another Toolbar button or a menu entry, to display the corresponding help topic.

You can also receive help about the current active window. If you want to open a window with detailed information use the shortcut keys F1.

9 Basic NMR Principles

NMR (Nuclear Magnetic Resonance) is made possible by the properties possessed by some atoms that cause their nuclei (part of every atom) to have a magnetic moment. The atom most commonly investigated by NMR is hydrogen (^1H), the nucleus of which is composed of a single proton. Hydrogen is present in many natural and synthetic substances like oil, water, polymers, pharmaceuticals and foodstuffs. Another nuclei often investigated is fluorine, typical applications include fluorine content in toothpaste or fluorine in chemical compounds.

In a strong external magnetic field (called polarizing field) produced by the permanent magnets in the Magnet Unit, the magnetic moments can be oriented, and the vector sum of all moments results in a macroscopic magnetization. The amount of magnetization depends on the strength of the external magnetic field and the temperature.

Pulses of radio frequency (RF) at a suitable frequency can influence the magnetization in the sample. In NMR this resonance frequency, called Larmor frequency, depends on the field strength of the external magnetic field and the nucleus investigated. For example, at a field strength of 0.47 Tesla, protons (^1H) have a resonance frequency of 20 MHz. The orientation of the magnetic field generated by the RF pulse is perpendicular to the static external polarizing field.

When, for example, a sample containing NMR-active nuclei is exposed to a strong external magnetic field by inserting a sample into the sample orifice of the magnet, the process of buildup of macroscopic magnetization will start immediately, but it takes some time until the equilibrium is reached. The time constant of this built-up process is called longitudinal relaxation time T_1 (see figure).

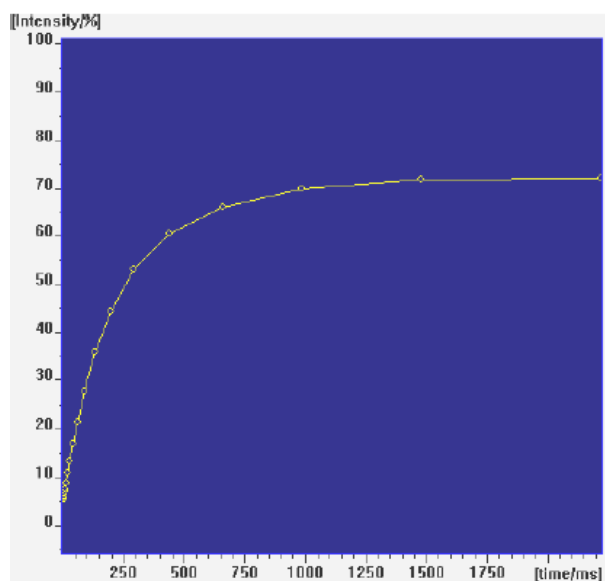


Figure 9.1: Increase of the NMR Signal Due to Longitudinal Relaxation

With skillful sequences of RF-pulses (generated by the minispec electronics and transmitted to the sample via the probe) the macroscopic magnetization can be influenced. One possibility is the generation of so-called transverse magnetization. This is not an equilibrium state, and therefore different relaxation processes arise. The transverse magnetization is still the vector sum of discrete atomic magnetic moments. Each one of these moments underlies a specific time evolution, and a loss of phase coherence results. The time scale of this magnetization loss is described by the transverse relaxation time T_2 (see figure) in the easiest case.

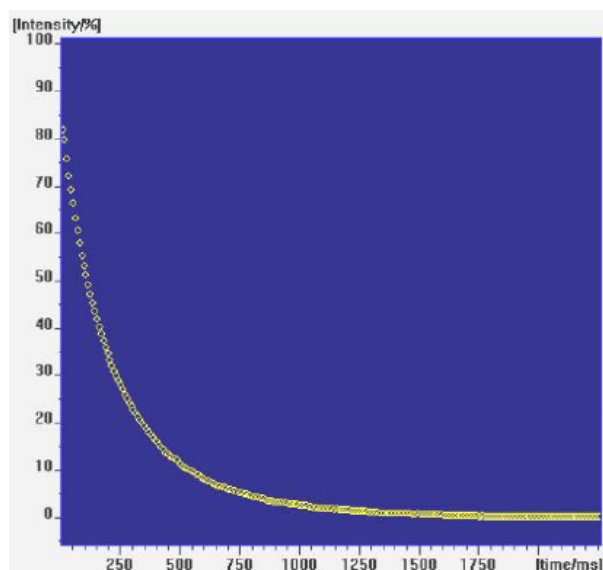


Figure 9.2: Decay of the NMR Signal Due to Transverse Relaxation

Secondly, the system naturally tends to relax back to the thermal equilibrium. This process is equivalent to the polarization process described above and takes place with the time constant T_1 . Various other processes are known from NMR-theory, depending on the pulse sequences used to manipulate the magnetization. These processes are described by different relaxation times, some examples are $T_{1\rho}$, T_{1D} , and T_{2e} .

Substances and materials can be characterized by relaxation measurements because the relaxation times are highly sensitive to molecular properties. For example, they can be sensors for various ranges of molecular motions. The large range of motions that can be characterized by NMR is a main point which makes NMR to such a valuable tool in analysis. For example, because of their different relaxation behavior solid and liquid parts in one sample can be distinguished clearly and their amount determined as in Solid Fat Content (SFC) measurements. As a consequence such materials as foodstuff, cosmetics, chemical products and much more can be investigated. For a more detailed description refer to the application descriptions available from Bruker.

Furthermore, the intensity of the NMR signal is a function of the number of atomic moments contributing to the macroscopic magnetization. Therefore, the signal is a measure of the number of nuclei in a sample. The minispec methods make use of this relationship to determine the amount of, for example, oil or moisture in a wide range of samples.

In summary, NMR makes use of the nuclei in substances as sensors of their surroundings, yielding important information about the matter. Since both excitation and detection are performed via electromagnetic waves in the radio frequency region, this analytical method is contactless, non-destructive, and rapid.

10 Maintenance

10.1 Cleaning

Before Cleaning

Disconnect the mains cable from the unit before cleaning.

Cleaning the Main Unit

Use a clean damp cloth to wipe off any residue from the outside of the unit. Wipe off excess moisture immediately with a dry cloth.

For non water soluble marks, wipe using a cloth with a few drops of isopropyl alcohol.

Before Reconnecting the Power Supply

Wait until the unit is completely dry before reconnecting the power supply!

11 Dismantling and Disposal

Following the end of its operational life, the unit can be returned to Bruker for safe disposal. If this is impractical, the unit should be disposed of safely as prescribed by local environmental regulations.



Installation, initial commissioning, retrofitting, repairs, adjustments or dismantling of the device must only be carried out by Bruker Service or personnel authorized by Bruker. Damage due to servicing that is not authorized by Bruker is not covered by your warranty.

11.1 Dismantling

Before starting dismantling:

1. Shut down the device and secure to prevent restarting.
2. Physically disconnect the power supply from the device; discharge stored residual energy.
3. Remove consumables, auxiliary materials and other processing materials and dispose of in accordance with the environmental regulations.
4. Clean assemblies and parts properly and dismantle in compliance with applicable local occupational safety and environmental protection regulations.

11.2 Disposal

If no return or disposal agreement has been made, send the dismantled components for recycling as prescribed by local environmental regulations.

- Scrap metals.
- Send plastic elements for recycling.
- Dispose of packaging material in accordance with the relevant applicable legal requirements and local regulations.
- Sort and dispose of other components in accordance with their material composition.

NOTICE

Danger to the environment from incorrect handling of pollutants!

Incorrect handling of pollutants, particularly incorrect waste disposal, may cause serious damage to the environment.

- ▶ Always observe local environmental regulations regarding handling and disposal of pollutants.
- ▶ Take the appropriate actions immediately if pollutants escape accidentally into the environment. If in doubt, inform the responsible municipal authorities about the damage and ask about the appropriate actions to be taken.

12 Contact

Manufacturer:

Bruker BioSpin GmbH
Am Silberstreifen
D-76287 Rheinstetten
Germany
Helpdesk Europe: (+49) 721-5161-6155
Helpdesk USA: (+1) 978-667-9580
E-Mail: minispec.SLS@bruker.com
<http://www.bruker.com>
WEEE DE43181702

Bruker BioSpin Hotlines

Contact our Bruker BioSpin service centers.

Bruker BioSpin provides dedicated hotlines and service centers, so that our specialists can respond as quickly as possible to all your service requests, applications questions, software or technical needs.

Please select the service center or hotline you wish to contact from our list available at:

<http://www.bruker.com/service/information-communication/helpdesk/magnetic-resonance.html>

List of Figures

Figure 2.1:	Magnet Stray Field Plot	12
Figure 4.1:	The minispec MQ-Series Rating Plate.....	21
Figure 5.1:	The minispec mq20 Toothpaste Analyzer	23
Figure 5.2:	The minispec Magnet Unit (left) and Electronic Control Unit (right).....	26
Figure 5.3:	Handles on the Side of the Magnet Unit	27
Figure 5.4:	Electronic Control and Magnet Units	28
Figure 5.5:	Back Planes of the Electronic Control Unit (top) and Magnet Unit (bottom).....	28
Figure 5.6:	Ring of the Quick-Release Fastener (left) and the Raising of the Probe Assembly (right)	30
Figure 7.1:	The minispec Plus Log-in Dialog	33
Figure 7.2:	The minispec Plus Main Menu.....	34
Figure 8.1:	The Welcome Box	48
Figure 8.2:	The View of the Signal Window, Result Window and the Spread Sheet	50
Figure 8.3:	The Default View	52
Figure 8.4:	The File Pull-Down Menu	53
Figure 8.5:	The Dialog Box for Data Saving Setup	54
Figure 8.6:	The Edit Pull-Down Menus for Different Active Windows	56
Figure 8.7:	The minispec Pull-Down Menu	57
Figure 8.8:	The minispec Settings Table	58
Figure 8.9:	The Measurement Pull-Down Menu	60
Figure 8.10:	The Parameter Pull-Down Menu	62
Figure 8.11:	The Acquisition Parameter Table	63
Figure 8.12:	The View Pull-Down Menu	65
Figure 8.13:	The Statistics Box	66
Figure 8.14:	Display Modes	67
Figure 8.15:	The Process Pull-Down Menu	69
Figure 8.16:	The Window Pull-Down Menu	70
Figure 8.17:	The Help Pull-Down Menu.....	71
Figure 9.1:	Increase of the NMR Signal Due to Longitudinal Relaxation.....	73
Figure 9.2:	Decay of the NMR Signal Due to Transverse Relaxation.....	74

Index

Numerics

1, 2, 3, 4, 5 Commands 55

A

Acquisition parameters 62
 Add applications 48
 Analyzer type 47
 Application programs 50

B

Balance Settings command 59
 Basic NMR Principles 73
 Blue crossed-wire UTP-cable 32
 Bruker minispec Software CD 20

C

Calibrate command 49, 61
 Cleaning the Main Unit 75
 Close Command 53
 Connect/Disconnect Command 57
 Connectors 28
 Copy Command 56
 CTRL+P 55
 Customize button 49

D

Daily Check command 59
 Default Storing 54
 Detect raw Signal command 62
 Detection mode (magnitude/real/imaginary/
 complex) 64
 Detection of flourine 23
 Dismantling 77
 Disposal 77
 Dummy Shots 63

E

Edit pull-down menu 56
 Electrical Connection Values 19
 Electronic Control Unit 26
 Erase All command 56
 Exit Command 55
 ExpSpel license number 49

F

File menu 53
 Find command 56

H

Help menu 32

I

I/O Port Settings command 59
 Inspect the delivery 16
 Installation CD 31
 Instrument Settings command 58
 IP addresses 32

L

Licenses command 60
 List of commands 57

M

Mag Cycle Steps 64
 Magnet Unit 26
 Measurement results 50
 Memory stick 31
 Menu functions 50
 minispec Plus software 31

N

NMR analyzer 49
 NMR signal display 50

O

Open Command 53
 Operating Environment 20

P

Packaging 17
 Parameters 50, 62
 Print Command 55
 Print Preview Command 55
 Print Setup Command 55

R

Rating plate 21
 RD (seconds) 63
 Recycling 77
 RELAXATION TIME 49
 Remove applications 48
 Result Box 54
 Result Window 50
 RUN 51

Run command	49
Run Repetitive command	62
Run, Stop and Continue commands	60

S

Save command	54
Save Setup Command	54
Saving in ASCII-format	51
Scans (1 – 32000)	63
Select All command	56
Settings command	58
Setup program	31
Signal Window	50
Siting Considerations	24
Spreadsheets	51
Stop command	49

T

TCP/IP 'Properties'	32
Technical Data:	19
Toolbars	52
Transport and handling	15

U

Unpacking the System	27
Unselect All command	56
Update Settings command	58
User interface	50

W

Wake-up configuration	47
Welcome Box	47





Bruker Corporation

info@bruker.com
www.bruker.com

Order No: E1400912